

## Data Sheet

### MLL3/WDR5/Ash2L/RbBP5/DPY30 Complex

Human, Recombinant

**Catalog #:** 100323

**Lot #:** 190318      **Conc.:** 0.58 mg/ml

**Formulated in:** 40 mM Tris-HCl pH 8.0, 110 mM NaCl, 2.2 mM KCl, 0.04% Tween-20, 20% glycerol, 200 mM imidazole, 1  $\mu$ M ZnCl<sub>2</sub>, 1mM TCEP.

**Stability:** At least 6 months at  $-80^{\circ}\text{C}$ .  
 Avoid freeze/thaw cycles.

**References:**

1. Patel, A., *et al.*, *J. Biol. Chem.* 2009; **284(36)**: 24242-24256.
2. Mohan, M., *et al.*, *Nat. Rev. Cancer* 2010; **10(10)**: 721-728.

**Description:** MLL3/WARD complex of human **MLL3** (GenBank Accession No. NM\_170606) a.a. 4689-4911(end) with N-terminal His-tag and MW= 27 kDa, human **WDR5** (GenBank Accession No. NM\_017588), a.a. 2-334(end) with N-terminal His-tag and MW= 37 kDa, human **Ash2L** (GenBank Accession No. NM\_001105214), a.a. 2-534(end) with N-terminal His-tag and MW= 61 kDa, human **RbBP5** (GenBank Accession No. NM\_005057), a.a. 2-538(end) with N-terminal His-tag and MW= 60 kDa, and human **DPY30** (GenBank Accession No. NM\_032574) a.a. 2-99(end) with N-terminal His-tag and MW=12 kDa individually expressed in an *E. coli* expression system.

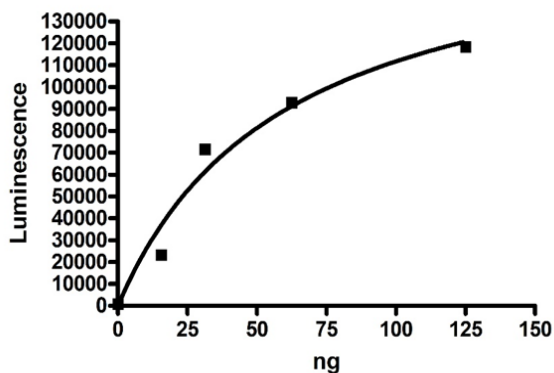
**Specific Activity:** 0.015 pmole/min/ $\mu$ g

Assay Conditions: H3, 1-21-Biotin was coated onto a neutravidin plate at 0.4  $\mu$ g/ml. Reaction mixture contained 1X HMT buffer 1 (50 mM Tris buffer pH 8.8, 5 mM MgCl<sub>2</sub>, 4 mM DTT, 0.05% Tween-20), various amounts of S-adenosylmethionine (40  $\mu$ M for SA determination, 20  $\mu$ M for inhibition), and/or various amounts of MLL3 Complex—incubated for 1-hour at room temperature. Followed by 1-hour incubation with primary antibody against 3MeK4 Histone 3 (cell signaling #9751) and 30-minute incubation with  $\alpha$ -rabbit secondary antibody (abcam). Luminescence was developed with ELISA ECL Substrates A and B (BPS #79670).

**Application(s):** Useful for the study of enzyme kinetics, screening inhibitors, and selectivity profiling.

### Quality Assurance

**Specific Activity**

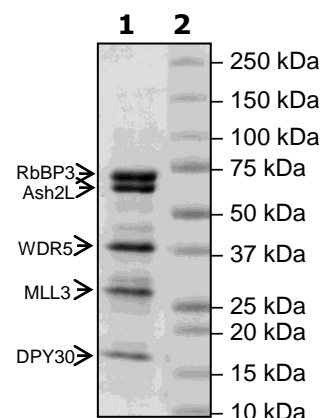


**4-20% SDS-PAGE  
 Coomassie staining**

**Lane 1:**  
 8  $\mu$ g MLL3-WARD  
**Lane 2:**  
 Protein Marker

**MW:** RbBP5: 60 kDa  
 Ash2L: 61 kDa  
 WDR5: 37 kDa  
 MLL3: 27 kDa  
 DPY30: 12 kDa

**Purity:**  $\geq 85\%$



OUR PRODUCTS ARE FOR RESEARCH USE ONLY. NOT FOR DIAGNOSTIC OR THERAPEUTIC USE.

To place your order, please contact us by Phone **1.858.202.1401** Fax **1.858.481.8694**

Or you can Email us at: [info@bpsbioscience.com](mailto:info@bpsbioscience.com)

Please visit our website at: [www.bpsbioscience.com](http://www.bpsbioscience.com)