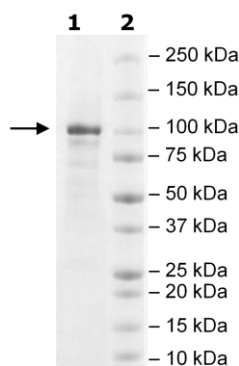


Product Information

Construct:	TET2 (FLAG-1129-2002(end)-His)
Concentration:	1.14 mg/ml
Species:	Human
Formulated In:	40 mM Tris-HCl pH 8.0, 110 mM NaCl, 2.2 mM KCl, 0.04% Tween-20, 20% glycerol, 3 mM DTT, 140 mM imidazole
Expression System:	Sf9
Format:	Aqueous buffer solution
Stability:	At least 6 months at -80°C. Avoid freeze/thaw cycles.
Storage:	-80°C
Genbank Accession:	NM_001127208
MW:	100 kDa
Purity:	80%
Assay Conditions:	Assay done according to TET2 Chemiluminescent Assay Kit (BPS Bioscience #50652) with TET2, FLAG-Tag, His-Tag (catalytic domain) titrated from 800 ng/rxn to 0 ng/rxn.
Applications:	Useful for the study of enzyme kinetics, screening inhibitors, and selectivity profiling.

Quality Control Data

4-20% SDS-Page Coomassie Staining



Specific Activity

