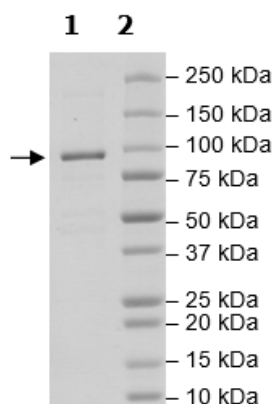


Product Information

Construct:	TET1 (FLAG-1418-2136(end))
Concentration:	1.0 mg/ml
Species:	Human
Formulated In:	40 mM Tris-HCl, pH 8.0, 110 mM NaCl, 2.2 mM KCl, 0.04% Tween20, 20% glycerol, 80 µg/ml FLAG peptide
Expression System:	Sf9
Format:	Aqueous buffer solution
Stability:	At least 6 months at -80°C. Avoid freeze/thaw cycles.
Storage:	-80°C
Genbank Accession:	NM_030625
MW:	80 kDa
Purity:	80%
Assay Conditions:	Reaction done according to TET1 Chemiluminescent Assay Kit (BPS Bioscience #50651). TET1 Enzyme was tested from 0 ng/µl-20 ng/µl. Kit conditions are 5 ng/µl.
Applications:	Useful for the study of enzyme kinetics, screening inhibitors, and selectivity profiling.

Quality Control Data

4-20% SDS-Page Coomassie Staining



TET1 Activity

