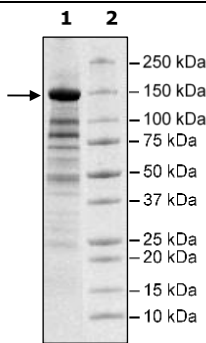


Product Information

Construct:	JMJD1A (FLAG-2-1321(end))
Concentration:	0.51 mg/ml
Species:	Human
Formulated In:	40 mM Tris-HCl pH 8.0, 110 mM NaCl, 2.2 mM KCl, 0.04% Tween-20, 20% glycerol, 90 ng/μl FLAG peptide.
Expression System:	Sf9
Format:	Aqueous buffer solution
Stability:	At least 6 months at -80°C. Avoid freeze/thaw cycles.
Storage:	-80°C
Genbank Accession:	NM_018433
MW:	148 kDa
Purity:	44%
Specific Activity:	>0.2 pmol/min/μg
Assay Conditions:	10 μl reaction mix containing assay buffer with 20 mM HEPES (pH 7.4), 50 mM NaCl, 1mM TCEP, 500 μM α-ketoglutarate, 25 μM iron, 2mM ascorbic acid, 0.01% Tween-20, 0.5 μM biotinylated peptide substrate, and JMJD1A (2 – 10ng) added to the wells. Add antibody against mono-methylated K9 peptide. Incubate for 30 min, then Streptavidin-conjugated secondary antibody followed by Alpha Screening detection.
Applications:	Useful for the study of enzyme kinetics, screening inhibitors, and selectivity profiling.

Quality Control Data

4-20% SDS-Page Coomassie Staining



Specific Activity

