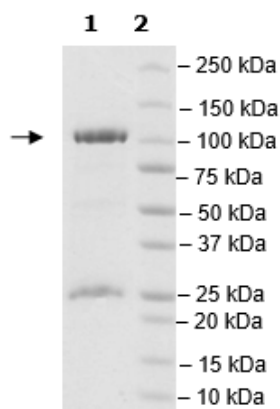


## Product Information

<b>Construct:</b>	LSD2 (KDM1B) (GST-TEV-2-822(end))
<b>Concentration:</b>	0.33 mg/ml
<b>Species:</b>	Human
<b>Formulated In:</b>	40 mM Tris-HCl, pH 8.0, 110 mM NaCl, 2.2 mM KCl, 0.04% Tween20, 20% glycerol, 16 mM glutathione
<b>Expression System:</b>	Sf9
<b>Format:</b>	Aqueous buffer solution
<b>Stability:</b>	At least 6 months at -80°C. Avoid freeze/thaw cycles.
<b>Storage:</b>	-80°C
<b>Genbank Accession:</b>	NM_001364614
<b>MW:</b>	121 kDa
<b>Purity:</b>	70%
<b>Specific Activity:</b>	11 pmol/min/μg
<b>Assay Conditions:</b>	For standard, various concentrations of H3, 1-21 K4 (1Me)-Biotin were added to the plate. For test lots, reaction mixture contained 2MeK4, diluted primary antibody 22, 1x LSD2 buffer, and various amounts of LSD2 enzyme—incubated for 1 hour at room temperature. Followed by addition of anti-rabbit acceptor beads and streptavidin-conjugated donor beads.
<b>Applications:</b>	Useful for the study of enzyme kinetics, screening inhibitors, and selectivity profiling.

## Quality Control Data

## 4-20% SDS-Page Coomassie Staining



## Specific Activity

