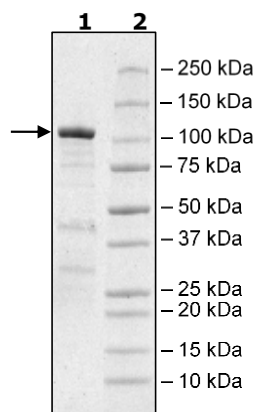


Product Information

Construct:	LSD1 (GST-Pre-158-852(end))
Concentration:	0.87 mg/ml
Species:	Human
Formulated In:	40 mM Tris-HCl pH 8.0, 110 mM NaCl, 2.2 mM KCl, 0.04% Tween-20, 20% glycerol
Expression System:	<i>E. coli</i>
Format:	Aqueous buffer solution
Stability:	At least 6 months at -80°C. Avoid freeze/thaw cycles.
Storage:	-80°C
Genbank Accession:	NM_015013
MW:	104 kDa
Purity:	78%
Assay Conditions:	Assay was performed according to the LSD1 (KDM1A) Chemiluminescent Assay Kit (BPS Bioscience #50109) with various amounts of LSD1.
Applications:	Useful for the study of enzyme kinetics, screening inhibitors, and selectivity profiling.

Quality Control Data

4-20% SDS-Page Coomassie Staining



LSD1 Activity

