

Data Sheet

LAT

Human, recombinant, N-terminal His-tag

Catalog #: 71188

Lot #: 140829-G2 **Conc.:** 0.18 mg/ml

Formulated in: 40 mM Tris pH 8.0, 110 mM NaCl, 2.2 mM KCl, 0.04% Tween-20, 20% glycerol and 3 mM DTT.

Stability: >6 months at -80°C . Avoid freeze/thaw cycles. Protein may be diluted to $\geq 100 \mu\text{g/ml}$ in PBS + glycerol and stored at -80°C .

References:

1. Zhang, W. *et al.*, *Cell*. 1998; **92(1)**: 83-92.
2. Balagopalan, L. *et al.*, *J. Immunol.* 2013; **190(8)**: 3849-53.

Description:

Human linker for activation of T cells family member 1 (LAT), also known as 36 kDa phospho-tyrosine adapter protein, pp36. GenBank Accession No. NM_001014989* variant 4, a.a. 64-269(end), with N-terminal His-tag, expressed in an *E. coli* expression system. MW = 24.4 kDa. This protein runs at a higher MW by SDS-PAGE due to glycosylation.

*Note this corresponds to a.a. 28-233 of variant 2, NM_001014989.

Application:

Useful as a kinase substrate and for screening small molecules and antibodies.

Quality Assurance

**4-20% SDS-PAGE
Coomassie staining**

Lane 1:

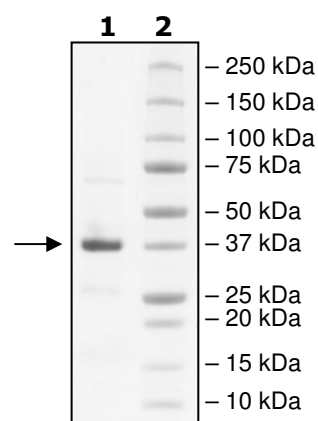
2 μg LAT

Lane 2:

Protein Marker

MW: 24.4 kDa + glycans

Purity: $\geq 90\%$



OUR PRODUCTS ARE FOR RESEARCH USE ONLY. NOT FOR DIAGNOSTIC OR THERAPEUTIC USE.

To place your order, please contact us by Phone **1.858.829.3082** Fax **1.858.481.8694**

Or you can Email us at: info@bpsbioscience.com

Please visit our website at: www.bpsbioscience.com