

Data Sheet

CTLA4 (CD152), Fc fusion, Biotin-labeled

Human, recombinant, Fc fusion, C-terminal biotin-tag

Catalog #: 71152

Lot #: 141208

Conc.: 1.18 mg/ml

Formulated in: 40 mM Tris, pH 8.0, 110 mM NaCl, 2.4 mM KCl, and 20% glycerol.

Stability: At least 6 months at -80°C . Avoid freeze/thaw cycles. Protein may be diluted to $\geq 100 \mu\text{g/ml}$ in PBS + glycerol and stored at -80°C .

References:

1. Dilek, N., *et al.*, *PLOS ONE*. 2013 Dec. 23; **8(12):**e83139.
2. Leach, D.R., *et al.*, *Science*. 1996; **271(5256):**1734-1736.

Description: Human secreted CTLA4, Fc fusion protein, also known as Cytotoxic T-lymphocyte-associated protein 4 and CD152. GenBank Accession No. NM_005214, a.a. 36-162, fused at the C-terminus to the Fc portion of human IgG1 and with a C-terminal Avi-tag, expressed in a HEK293 cell expression system. This protein was biotinylated using AviTag™ technology. MW = 42 kDa (monomer). Note: This protein runs at a higher MW by SDS-PAGE due to glycosylation.

Application: Useful for studying protein binding and screening small molecules.

Quality Assurance

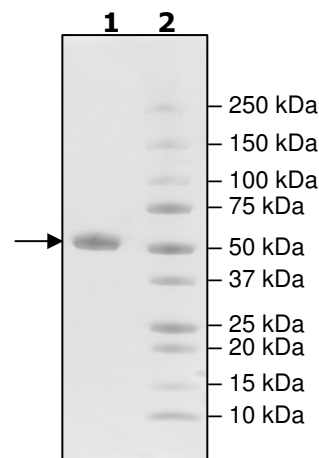
4-20% SDS-PAGE
Coomassie staining

Lane 1:
3 μg CTLA4

Lane 2:
Protein Marker

MW: 42 kDa + glycans

Purity: $\geq 95\%$



OUR PRODUCTS ARE FOR RESEARCH USE ONLY. NOT FOR DIAGNOSTIC OR THERAPEUTIC USE.

To place your order, please contact us by Phone **1.858.829.3082** Fax **1.858.481.8694**

Or you can Email us at: info@bpsbioscience.com

Please visit our website at: www.bpsbioscience.com



6044 Cornerstone Court W, Ste E
San Diego, CA 92121
Tel: 1.858.829.3082
Fax: 1.858.481.8694
Email: info@bpsbioscience.com

Sequence

**KAMHVAQPAVVLASSRGIASFVCEYASPGKATEVRVTVLRQADSQVTEVCAATYMM
GNELTFLDDSICTGTSSGNQVNLTIQGLRAMDTGLYICKVELMYPPPYLIGINGTQIY
VIDPEPCPDSDFIEGRMDPKSCDKTHTCPPCPAPELLGGPSVFLFPPKPKDTLMISRTPEVTCVVVDVSHEDPEVKFNWYVDGVEVHNAKTKPREEQYNSTYRVVSVLTVLHQDWLNGKEYKCKVSNKALPAPIEKTISKAKGQPREPQVYTLPPSRDELTKNQVSLTCLVKGFYPSDIAVEWESNGQPENNYKTTTPVLDSDGSFFLYSKLTVDKSRWQQGNVFSQVSMHEALHNHYTQKSLSLSPGKGGGLNDIFEAQKIEWHE**

Black: CTLA4 (a.a. 36-162)

Green: linker

Red: Fc of human IgG1 (a.a. 100-330)

Blue: Avi-tag sequence

OUR PRODUCTS ARE FOR RESEARCH USE ONLY. NOT FOR DIAGNOSTIC OR THERAPEUTIC USE.

To place your order, please contact us by Phone **1.858.829.3082** Fax **1.858.481.8694**

Or you can Email us at: [**info@bpsbioscience.com**](mailto:info@bpsbioscience.com)

Please visit our website at: [**www.bpsbioscience.com**](http://www.bpsbioscience.com)