

## Data Sheet

### HVEM, Fc-Fusion, Biotin

#### Labeled

Human, recombinant, Fc fusion protein with C-terminal Avi-tag™

**Catalog #:** 71143

**Lot#:** 140417-BD      **Conc.:** 0.88 mg/ml

**Formulated in:** 40 mM Tris-HCl, pH 8.0, 110 mM NaCl, 2.2 mM KCl, and 20% glycerol

**Stability:** >6 months at -70°C. Avoid freeze/thaw cycles. Protein may be diluted to ≥ 100 µg/ml in PBS + glycerol and stored at -80°C.

**Endotoxin Level:** <0.1 EU/µg

#### References:

- Derre, L., et al. *J. Clin. Invest.* 2010, **120(1)**: 157-167.
- Steinberg, M.W., et al. *J. Exp.Med.* 2008, **205(6)**: 1463-1476.

#### Description:

Human herpesvirus entry mediator A, also known as HVEM, TNFRSF14, CD270, and HVEA, GenBank Accession No. NM\_003820, a.a. 37-202 fused to human IgG1 Fc, with C-terminal Avi-tag™, expressed in a HEK293 cell expression system. MW = 46 kDa. This protein runs at a higher M.W. by SDS-PAGE due to glycosylation.

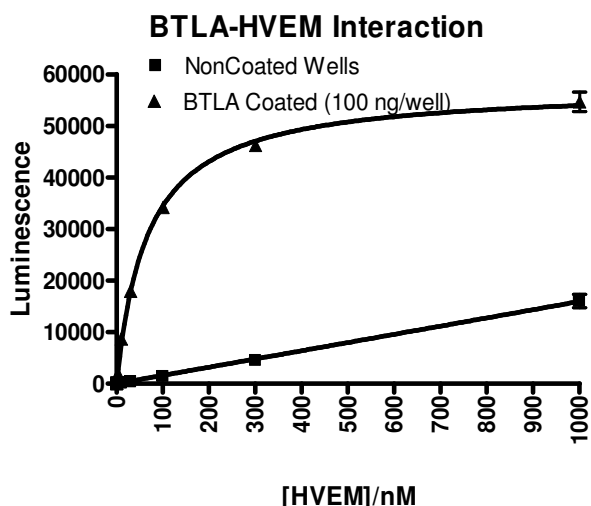
#### Assay Conditions:

BTLA:HVEM binding activity, measured using the using the BTLA:HVEM [Biotinylated] Inhibitor Screening Assay Kit, BPS Bioscience, Catalog #72008.

#### Application:

Useful for the study of protein-protein interaction and in vitro and in vivo protein function studies.

### Quality Assurance

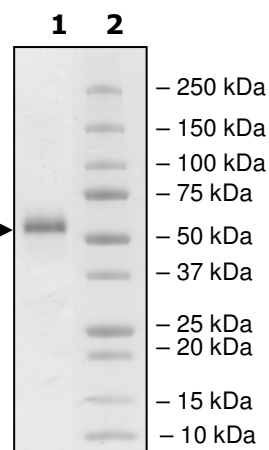


#### 4-20% SDS-PAGE Coomassie staining

**Lane 1:**  
2 µg HVEM, Biotin

**Lane 2:**  
Protein Marker

**MW:** 46 kDa + glycans  
**Purity:** ≥90%



OUR PRODUCTS ARE FOR RESEARCH USE ONLY. NOT FOR DIAGNOSTIC OR THERAPEUTIC USE.

To place your order, please contact us by Phone **1.858.829.3082** Fax **1.858.481.8694**  
 Or you can Email us at: [info@bpsbioscience.com](mailto:info@bpsbioscience.com)  
 Please visit our website at: [www.bpsbioscience.com](http://www.bpsbioscience.com)



6044 Cornerstone Court W, Ste E  
San Diego, CA 92121  
**Tel:** 1.858.829.3082  
**Fax:** 1.858.481.8694  
**Email:** [info@bpsbioscience.com](mailto:info@bpsbioscience.com)

***Sequence:***

PALPSCKEDEYYPVGSECCPKCSPGYRVKEACGELTGTVCEPCPPGT<sup>IAHLNGLSKC</sup>  
LQCQMCDPAMGLRASRNC<sup>SRTENAVCGCSPGHFCIVQDGDHCAACRAYATSSPGQ</sup>  
RVQKGGTESQDTLCQNCPPGTFSPNGTLEECQHQT<sup>KCSWLVTKAGAGTSSSHWVIE</sup>  
<sup>GRMD</sup>PKSCDKTHTCPPCPAPELLGGPSVFLFPPKPKDTLMISRTPEVTCVVDVSHED  
PEVKFNWYVDGVEVHNAKTKPREEQYNSTYRVVSVLTVLHQDWLNGKEYKCKVSNKA  
LPAPIEKTISKAKGQPREPQVYTLPPSRDELTKNQVSLTCLVKGFYPSDIAVEWESNGQ  
PENNYKTTTPVLDSDGSFFLYSKLTVDKSRWQQGNV<sup>FSCSVMHEALHNHYTQKSLSL</sup>  
<sup>SPGKGGGLNDIFEAQKIEWHE</sup>

Black: HVEM (a.a. 37-202)

Green: linker

Red: Fc of human IgG1 (a.a. 100-330)

Blue: Avi-tag

OUR PRODUCTS ARE FOR RESEARCH USE ONLY. NOT FOR DIAGNOSTIC OR THERAPEUTIC USE.

To place your order, please contact us by Phone **1.858.829.3082** Fax **1.858.481.8694**

Or you can Email us at: [info@bpsbioscience.com](mailto:info@bpsbioscience.com)

Please visit our website at: [www.bpsbioscience.com](http://www.bpsbioscience.com)