



6405 Mira Mesa Blvd Ste 100

San Diego, CA 92121

Tel: 1.858.202.1401

Fax: 1.858.481.8694

Email: support@bpsbioscience.com

Data Sheet

PD-L1 - CHO Recombinant Cell line

Cat. #: 60543

Product Description

Recombinant CHO-K1 cells constitutively expressing human PD-L1 (Programmed Cell Death 1 Ligand 1, CD274, B7 homolog 1 (B7- H1), GenBank accession #NM_014143).

Background

The binding of Programmed Cell Death Protein 1 (PD-1), a receptor expressed on activated T-cells, to its ligands, PD-L1 and PD-L2, negatively regulates immune responses. The PD-1 ligands are found on most cancers, and PD-1:PD-L1/2 interaction inhibits T cell activity and allows cancer cells to escape immune surveillance. The PD-1:PD-L1/2 pathway is also involved in regulating autoimmune responses, making these proteins promising therapeutic targets for a number of cancers, as well as multiple sclerosis, arthritis, lupus, and type I diabetes.

Applications

- Screen PD-L1 antibodies for binding affinity and biological assays.

Format

Each vial contains $\sim 2.5 \times 10^6$ cells in 1 ml of 10% DMSO

Storage

Immediately upon receipt, store in liquid nitrogen.

Mycoplasma Testing

The cell line has been screened using the PCR-based Venor[®]GeM Mycoplasma Detection kit (Sigma-Aldrich) to confirm the absence of *Mycoplasma* species.

General Culture Conditions

Thaw Medium 3 (BPS Bioscience, #60186): F-12K Medium supplemented with 10% FBS, 1% Penicillin/Streptomycin

Growth Medium 3D (BPS Bioscience, #79539): F-12K Medium supplemented with 10% FBS, 1% Penicillin/Streptomycin plus 1 mg/ml G418

It is recommended to quickly thaw the frozen cells from liquid nitrogen in a 37°C water-bath, transfer to a tube containing 10 ml of Thaw Medium 3 (**without Geneticin**), spin down cells, re-suspend cells in pre-warmed Thaw Medium 3 (**without Geneticin**), transfer re-suspended cells to T25 flask and culture in 37°C CO₂ incubator overnight. The next day, replace the medium with fresh Thaw Medium 3 (**without Geneticin**), and continue growing culture in a CO₂

OUR PRODUCTS ARE FOR RESEARCH USE ONLY. NOT FOR DIAGNOSTIC OR THERAPEUTIC USE.

To place your order, please contact us by Phone **1.858.202.1401** Fax **1.858.481.8694**

Or you can Email us at: support@bpsbioscience.com

Please visit our website at: www.bpsbioscience.com

incubator at 37°C until the cells are ready to be split. Cells should be split before they reach complete confluence. At first passage switch to Growth Medium 3D (**containing Geneticin**).

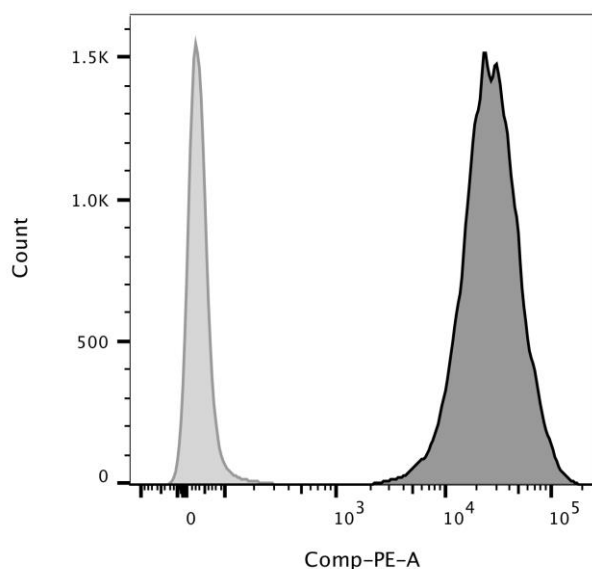
To passage the cells, rinse cells with phosphate buffered saline (PBS), detach cells from culture vessel with 0.05% Trypsin/EDTA, add Growth Medium 3D and transfer to a tube, spin down cells, re-suspend cells and seed appropriate aliquots of cell suspension into new culture vessels. Sub cultivation ration: 1:10 to 1:20 twice a week.



Cell Validation

Expression of human PD-L1 in PD-L1-CHO cells was confirmed by Western blotting and FACS.

Figure 1. FACS analysis of cell surface expression of PD-L1 in PD-L1-CHO cells.

PD-L1-CHO or parental CHO-K1 cells were stained with PE-labeled anti-PD-L1 antibody (BPS Bioscience #71128) and analyzed by FACS. Y-axis shows the cell count. X-axis shows the intensity of PE fluorescence.



	Samples	Subset	Cell Count
	Parental CHO cell + PE-anti-PD-L1 Ab	Live cells	20339
	PD-L1-CHO cell + PE-anti-PD-L1 Ab	Live cells	20014

OUR PRODUCTS ARE FOR RESEARCH USE ONLY. NOT FOR DIAGNOSTIC OR THERAPEUTIC USE.

To place your order, please contact us by Phone **1.858.202.1401** Fax **1.858.481.8694**

Or you can Email us at: support@bpsbioscience.com

Please visit our website at: www.bpsbioscience.com



6405 Mira Mesa Blvd Ste 100

San Diego, CA 92121

Tel: 1.858.202.1401

Fax: 1.858.481.8694

Email: support@bpsbioscience.com

Sequence

hPD-L1 sequence (Genbank accession #NM_014143)

MRIFAVFIFMTYWHLNNAFTVTVPKDLYVVEYGSNMTIECKFPVEKQLDLAALIVWEMEDKNI
IQFVHGEEEDLKVQHSSYRQRARLLKDQLSLGNAALQITDVKLQDAGVYRCMISYGGADYKRITV
KVNAPYNKINQRILVVDPVTSEHELTCAEGYPKAEVIWTSSDHQVLSGKTTTTNSKREEKLFN
VTSTLRINTTTNEIFYCTFRRLDPEENHTAELVIPELPLAHPNERTHLVILGAILLCLGVALT
FIFRLRKGRMMDVKKCGIQDTNSKKQSDTHLEET

Related Products

Product

	<u>Cat. #</u>	<u>Size</u>
PD-1/NFAT Reporter-Jurkat cell line	60535	2 vials
TCR Activator/PD-L1-CHO cell line	60536	2 vials
NFAT Reporter – Jurkat cell line	60621	2 vials
TCR activator-CHO cell line	60539	2 vials
Anti-PD-1 Neutralizing Antibody	71120	100 µg
Anti-PD-L1 Neutralizing Antibody	71213	100 µg
Anti-PD-L1 Neutralizing Antibody, PE-labeled	71128-1	50 µg
Anti-PD-L1 Neutralizing Antibody, Biotin-labeled	71214	100 µg
TCR activator / PD-L1 expression kit	60610	500 rxns.
TCR activator / PD-L2 expression kit	60620	500 rxns.
ONE-Step™ Luciferase Assay System	60690-1	10 ml
Human PD-1 (CD279), Fc fusion	71106	100 µg
Human PD-1, FLAG-Avi-His-tag	71198	50 µg
Human PD-L1 (CD274), Fc fusion	71104-1	50 µg
Human PD-L1 (CD274), FLAG-Avi-His tag	71183	50 µg
Human PD-L2 (CD273), Fc fusion	71107	100 µg
Human PD-1, Fc fusion, Biotin-labeled	71109	50 µg
Human PD-L1, Fc fusion, Biotin-labeled	71105	50 µg

License Disclosure:

Visit bpsbioscience.com/license for the label license and other key information about this product.

OUR PRODUCTS ARE FOR RESEARCH USE ONLY. NOT FOR DIAGNOSTIC OR THERAPEUTIC USE.

To place your order, please contact us by Phone **1.858.202.1401** Fax **1.858.481.8694**

Or you can Email us at: support@bpsbioscience.com

Please visit our website at: www.bpsbioscience.com