

Data Sheet

LOXL4 (E. coli-derived)

Human, Recombinant, C-terminal His-tag

Catalog #: 60524

Lot #: 111007 **Conc.:** 0.33 mg/ml

Formulated in: 9 mM Na₂HPO₄/KH₂ PO₄
pH 7.4, 124 mM KCl, 2.4 mM KCl and
10% glycerol

Stability: At least 6 months at -80°C.
Avoid freeze/thaw cycles. Storing diluted
enzyme is not recommended, if
necessary, use carrier protein (BSA 0.1
– 0.5%).

References:

1. Gorogh, T., *et al.*, *Int. J. Oncol.* 2008;
33(5): 1091-1098.
2. Kim, D.J., *et al.*, *Biochem. Biophys.*
Res. Commun. 2008; **4:** 521-527.

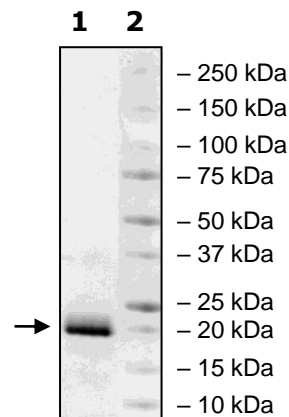
Description: Human Lysyl oxidase
homolog 4 (LOXL4), also known as Lysyl
oxidase-related protein C (LOXC).
GenBank Accession No. NM_032211, a.a.
570-756(end) with a C-terminal His-tag
expressed in an *E. coli* expression system.

Quality Assurance

6-20% SDS-PAGE Coomassie staining

Lane 1:
2 µg LOXL4
Lane 2:
Protein Marker

Purity: ≥90%
MW: 23 kDa



OUR PRODUCTS ARE FOR RESEARCH USE ONLY. NOT FOR DIAGNOSTIC OR THERAPEUTIC USE.

To place your order, please contact us by Phone **1.858.202.1401** Fax **1.858.481.8694**
Or you can Email us at: support@bpsbioscience.com
Please visit our website at: www.bpsbioscience.com