

## Data Sheet

### LKB1/MO25/STRAD Complex

Human, recombinant protein complex

**Catalog #:** 40069

**Lot #:** 100524-2      **Conc.:** 0.8 mg/ml

**Formulated in:** 45 mM Tris-HCl, pH 8.0, 124 mM NaCl, 2.4 mM KCl, 18 mM glutathione, 10% glycerol, and 3 mM DTT.

**Stability:** At least 6 months at  $-80^{\circ}\text{C}$ .  
 Avoid multiple freeze/thaw cycles.

**References:**

1. Yoo, L.I., *et al.* (2002). *Nat. Rev. Cancer* **2(7)**: 529-535.
2. Katajisto P, *et al.* (2007). *Biochim. Biophys. Acta* **1775 (1)**: 63-75.

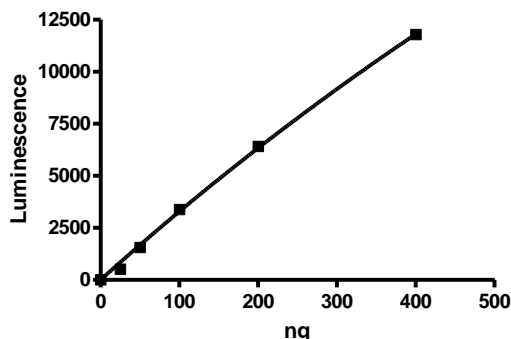
**Description:** Complex of human LKB1, also known as STK11, GenBank Accession No. NM\_000455, a.a. 2-433, with N-terminal His-tag, calculated MW=49 kDa (LKB1 runs anomalously on SDS-PAGE), MO25 GenBank Accession No. NM\_016289, a.a. 2-341, with N-terminal GST-tag, calculated MW=66 kDa and STRAD, GenBank Accession No. NM\_001003787, a.a. 2-431, with N-terminal GST-tag, calculated MW=74 kDa, individually expressed in Sf9 cells using a Baculovirus expression system.

**Specific Activity:** 24 pmole/min/ $\mu\text{g}$ .  
 Assay Condition: 100  $\mu\text{M}$  ATP and 0.2 mg/ml LKBtide peptide was used as a substrate. Reaction was done at  $30^{\circ}\text{C}$  for 30 min. Reaction progress was monitored using ADP-Glo reagents (Promega).

**Application:** Useful for the study of enzyme kinetics, screening inhibitors, and selectivity profiling.

### Quality Assurance

**Specific Activity**



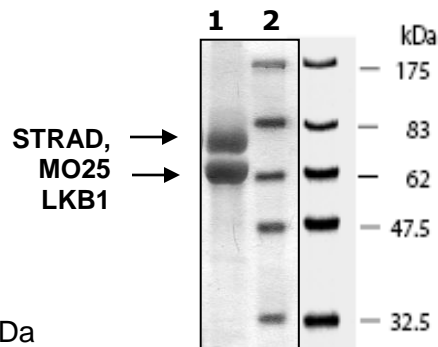
**10% SDS-PAGE**  
**Coomassie staining**

**Lane 1:**  
 10  $\mu\text{g}$  LKB1/  
 MO25/STRAD complex

**Lane 2:**  
 Protein Marker  
 BioLabs (#P7708L)

**MW:** 49, 66, 74 kDa

**Purity:**  $\geq 70\%$



OUR PRODUCTS ARE FOR RESEARCH USE ONLY. NOT FOR DIAGNOSTIC OR THERAPEUTIC USE.

To place your order, please contact us by Phone **1.858.202.1401** Fax **1.858.481.8694**

Or you can Email us at: [info@bpsbioscience.com](mailto:info@bpsbioscience.com)

Please visit our website at: [www.bpsbioscience.com](http://www.bpsbioscience.com)