

Data Sheet

CK2 α 1, GST-tag

Human, recombinant, N-terminal GST-tag

Catalog #: 40045

Lot#: 191022 **Conc.:** 0.10 mg/ml

Formulated in: 50 mM Tris-HCl, pH 7.5, 150 mM NaCl, 0.25 mM DTT, 0.1 mM EGTA, 0.1 mM EDTA, 0.1 mM PMSF, 25% glycerol.

Stability: At least 6 months at -80°C .
 Avoid freeze/thaw cycles.

References:

1. Rifkin, IR. *et al. J Immunol.* 1998 Nov 15, **161(10)**:5164-70.
2. Guerra B. *et al. FEBS Lett.* 1999 Dec 3, **462(3)**:353-7.

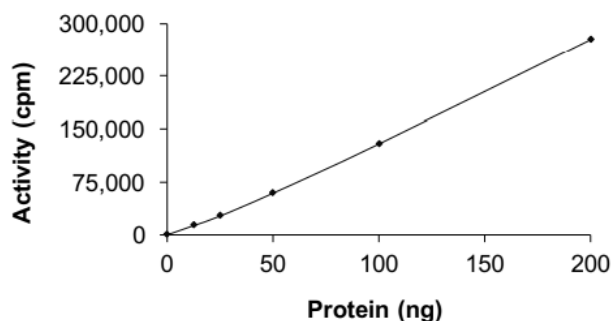
Description: Human CK2 α 1, also known as CK2alpha1, CSNK2A1 and CKII, GenBank Accession No. NM_001895, a.a. full length, with an N-terminal GST-tag, expressed in an Sf9 infected baculovirus expression system. MW=70 kDa.

Specific Activity: 91 pmol/min/ μg

Application: Useful for the study of enzyme kinetics, screening inhibitors, and selectivity profiling.

Quality Assurance

Specific Activity

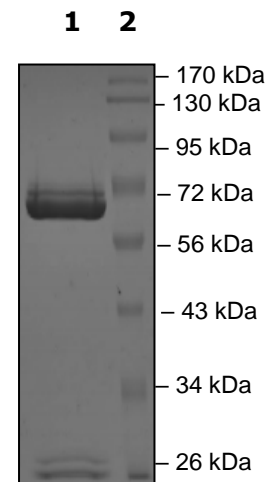


4-20% SDS-PAGE Coomassie staining

Lane 1:
CK2 α 1
Lane 2:
Protein Marker

MW: 70 kDa

Purity: $\geq 85\%$



OUR PRODUCTS ARE FOR RESEARCH USE ONLY. NOT FOR DIAGNOSTIC OR THERAPEUTIC USE.

To place your order, please contact us by Phone **1.858.202.1401** Fax **1.858.481.8694**

Or you can Email us at: info@bpsbioscience.com

Please visit our website at: www.bpsbioscience.com



6042 Cornerstone Court West, Suite B
San Diego, CA 92121
Tel: 1.858.202.1401
Fax: 1.858.481.8694
Email: info@bpsbioscience.com

OUR PRODUCTS ARE FOR RESEARCH USE ONLY. NOT FOR DIAGNOSTIC OR THERAPEUTIC USE.
To place your order, please contact us by Phone **1.858.202.1401** Fax **1.858.481.8694**
Or you can Email us at: [**info@bpsbioscience.com**](mailto:info@bpsbioscience.com)
Please visit our website at: [**www.bpsbioscience.com**](http://www.bpsbioscience.com)