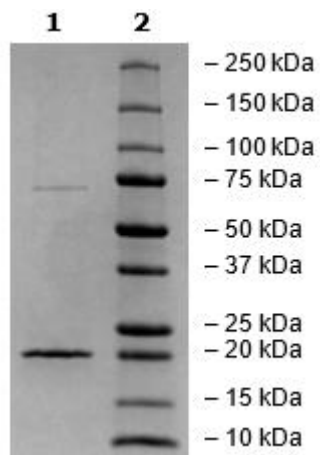


## Product Information

<b>Description:</b>	Recombinant human claudin-6, full length encompassing amino acids 1-220 (end). This construct contains a C-terminal FLAG-tag. This protein was affinity purified.
<b>Background:</b>	Claudins are integral membrane proteins and major components of tight junction strands which serve as a physical barrier to prevent solutes and water from passing freely through the paracellular space between epithelial or endothelial cell sheets. Claudin-6 is one of the 27 members of the claudin family. Claudin-6 is widely expressed in various tumors but rarely expressed in healthy adult tissues. This cancer specific expression of claudin-6 makes it a promising target as an antigen for cancer immunotherapy. Several therapeutics that target claudin-6 are currently in development or in clinical trials including bispecific antibodies, monoclonal antibodies, and CAR-T cell therapy products.
<b>Species:</b>	Human
<b>Construct:</b>	Claudin-6 (1-220(end)-FLAG)
<b>Concentration:</b>	0.26 mg/ml
<b>Expression System:</b>	HEK293
<b>Purity:</b>	≥90%
<b>Format:</b>	Aqueous buffer solution.
<b>Formulated In:</b>	50 mM HEPES, pH 8.0, 300 mM NaCl, 10% Glycerol, 0.1% DDM (dodecyl-β-D-maltoside), 0.01% CHS (cholesteryl hemisuccinate), and 140 µg/ml FLAG peptide
<b>MW:</b>	23 kDa
<b>Genbank Accession:</b>	NM_021195.5
<b>Stability:</b>	At least 6 months at -80°C.
<b>Storage:</b>	-80°C
<b>Instructions for Use:</b>	Thaw on ice and gently mix prior to use. DO NOT VORTEX. Perform a quick spin before opening. Aliquot into small volumes and flash freeze for long term storage. Avoid multiple freeze/thaw cycles.
<b>Assay Conditions:</b>	Binding to Anti-Claudin-6 antibody (Santa Cruz Biotechnology #sc-393671) was performed using ELISA. The Claudin-6 protein was coated onto a 96-well plate overnight at 4°C (50 µl/well at a concentration of 2 µg/ml in PBS). The plate was washed 3 times with Immuno Buffer 1 (BPS Bioscience #79311) containing DDM/CHS detergent (DDM 0.05%, CHS 0.01%), and blocked using 100 µl of Blocking Buffer 2 (BPS Bioscience #79728) with DDM/CHS for 1 hour at room temperature. After removing the blocking buffer, 50 µl/well of purified anti-Claudin-6 antibody serial dilutions in Blocking Buffer 2 with DDM/CHS detergent was added and incubated for 45 minutes at room temperature. After 3 washes, the plate was incubated with Anti-Mouse IgG H&L (HRP) (Abcam #ab7061), washed 3 times, and incubated with Colorimetric HRP substrate (BPS Bioscience #79651). The reaction was stopped, and absorbance was read at 450 nm. The Blank value was subtracted from all values.
<b>Applications:</b>	Useful for binding assays and SDS-PAGE.

## Quality Control Data

### 4-20% SDS-PAGE Coomassie Staining



### Claudin-6: Anti-Claudin-6 Antibody Binding Assay

