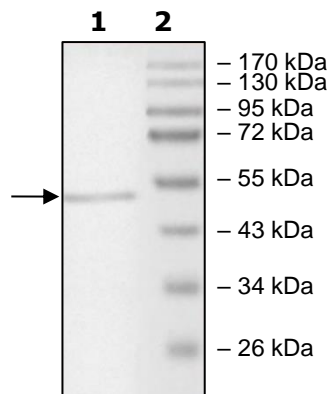


Product Information

Description:	Recombinant <i>Enterococcus italicus</i> EiCsm6 (type III-A CRISPR-associated CARF protein Csm6), full length. This construct contains a C-terminal His-tag. EiCsm6 is an ancillary ribonuclease associated with type III CRISPR-Cas system and contains a CRISPR-associated Rossmann fold domain.
Species:	<i>Enterococcus italicus</i>
Construct:	Csm6 (Full Length-His) (<i>E. italicus</i>)
Concentration:	0.50 mg/ml
Expression System:	<i>E. coli</i>
Purity:	≥90%
Format:	Aqueous buffer solution.
Formulated In:	50 mM sodium phosphate, pH 7.5, 300 mM NaCl, 200 mM imidazole, 1 mM DTT, and 10% glycerol
MW:	52 kDa
Genbank Accession:	WP_007208953
Stability:	At least 6 months at -80°C.
Storage:	-80°C
Instructions for Use:	Thaw on ice and gently mix prior to use. DO NOT VORTEX. Perform a quick spin before opening. Aliquot into small volumes and flash freeze for long term storage. Avoid multiple freeze/thaw cycles.
Assay Conditions:	Variable amounts of EiCsm6 RNase activity were measured using fluorogenic substrate and read overtime using Tecan plate reader.
Applications:	Useful for the study of enzyme kinetics, screening inhibitors, and selectivity profiling.

Quality Control Data

4-20% SDS-PAGE Coomassie Staining



EiCsm6 RNase Activity

