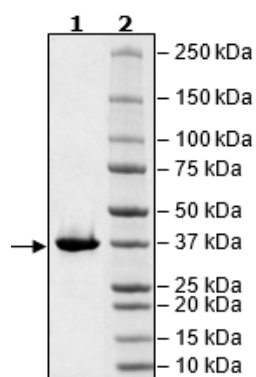


## Product Information

<b>Description:</b>	Recombinant human BRD3 (Bromodomain containing 3) BD2 domain, , encompassing amino acids 305-417. This construct contains an N-terminal GST-tag. This protein was affinity purified.
<b>Background:</b>	BRD3, also known as RING3L (RING3-like protein) belongs to the BET family of proteins and is involved in transcription by associating with acetylated lysine residues present in histones and transcription factors. Chromosomal translocations of BRD3 with NUT (nuclear protein in testis) can lead to cancer, and it has been shown that the use of BET inhibitors or depletion of BRD3 can slow down cancer progression in models of prostate cancer. The use of PROTAC technology for degradation of BRD proteins is an active field of research which maybe prove crucial in cancer therapy.
<b>Species:</b>	Human
<b>Construct:</b>	BRD3 (BD2) (GST-306-417)
<b>Concentration:</b>	4.10 mg/ml
<b>Expression System:</b>	<i>E. coli</i>
<b>Purity:</b>	≥90%
<b>Format:</b>	Aqueous buffer solution.
<b>Formulated In:</b>	40 mM Tris-HCl, pH 8.0, 110 mM NaCl, 2.2 mM KCl, 20% glycerol, and 3 mM DTT
<b>MW:</b>	40 kDa
<b>Genbank Accession:</b>	NM_007371
<b>Stability:</b>	At least 6 months at -80°C.
<b>Storage:</b>	-80°C
<b>Instructions for Use:</b>	Thaw on ice and gently mix prior to use. DO NOT VORTEX. Perform a quick spin before opening. Aliquot into small volumes and flash freeze for long term storage. Avoid multiple freeze/thaw cycles.
<b>Assay Conditions:</b>	Assay run according to BRD3 (BD2) Inhibitor Screening Assay Kit (#32523). 100 nM BET Ligand was incubated with various amounts of BRD3 (BD2) for 30 minutes. GSH acceptor bead and streptavidin-conjugated donor beads were added, and the reaction was incubated for 30 minutes. Alpha-counts were measured.
<b>Applications:</b>	Useful for binding studies, screening binding inhibitors, and selectivity profiling.

## Quality Control Data

4-20% SDS-PAGE Coomassie Staining



BRD3(BD2) Acetylated Ligand Binding

