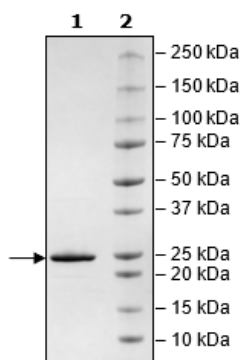


Product Information

Construct:	MCL1 (His-2-210) (Guinea Pig)
Concentration:	1.98 mg/ml
Species:	Guinea Pig
Formulated In:	40 mM Tris-HCl, pH 8.0, 110 mM NaCl, 2.2 mM KCl, 0.04% Tween-20, 20% glycerol, and 3 mM DTT
Expression System:	<i>E. coli</i>
Format:	Aqueous buffer solution
Stability:	At least 6 months at -80°C. Avoid freeze/thaw cycles.
Storage:	-80°C
Genbank Accession:	XP_023416939.1
MW:	24 kDa
Purity:	≥90%
Assay Conditions:	Assay run according to MCL-1 TR-FRET Assay Kit (BPS Bioscience Kit #79506). Enzyme mixture incubated for 1 hour at room temperature and TR-FRET measured at ex 340 nm / em 620 nm, 665 nm.
Applications:	Useful for the study of enzyme kinetics, screening inhibitors, and selectivity profiling.

Quality Control Data

4-20% SDS-PAGE Coomassie Staining



Guinea Pig MCL-1:MCL-1Ligand [Biotinylated] Binding Activity

