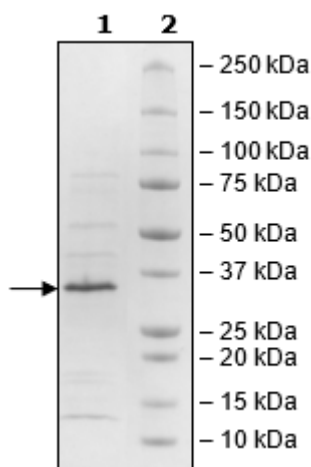


## Product Information

<b>Description:</b>	Recombinant rat MCL1 (myeloid cell leukemia sequence 1) encompassing amino acids 2-307. This construct contains a N-terminal His-Tag (6xHis). The protein was affinity purified.
<b>Species</b>	Rat
<b>Construct:</b>	MCL1 (His-2-307)
<b>Concentration:</b>	0.58 mg/ml
<b>Expression System:</b>	<i>E. coli</i>
<b>Purity:</b>	73%
<b>Format:</b>	Aqueous buffer solution.
<b>Formulated In:</b>	40 mM Tris-HCl, pH 8.0, 110 mM NaCl, 2.2 mM KCl, 0.04% Tween-20, 20% glycerol, and 3 mM DTT
<b>MW:</b>	34 kDa
<b>Genbank Accession:</b>	NM_021846
<b>Stability:</b>	At least 6 months at -80°C.
<b>Storage:</b>	-80°C
<b>Instructions for Use:</b>	Thaw on ice and gently mix prior to use. DO NOT VORTEX. Perform a quick spin before opening. Aliquot into small volumes and flash freeze for long term storage. Avoid multiple freeze/thaw cycles.
<b>Assay Conditions:</b>	Assay was done according to MCL-1 TR-FRET Assay Kit (Rat) (BPS Bioscience #78804) with various amounts of MCL-1 (Rat).
<b>Applications:</b>	Useful for the study of enzyme kinetics, screening inhibitors, and selectivity profiling.

## Quality Control Data

4-20% SDS-PAGE Coomassie Staining



Rat MCL-1: MCL-1 Ligand [Biotinylated] Binding

