

Product Information

Construct:	MCL1 (His-2-308) (Mouse)
Concentration:	0.29 mg/ml
Species:	Mouse
Formulated In:	40 mM Tris-HCl, pH 8.0, 110 mM NaCl, 2.2 mM KCl, 0.04% Tween20, 3mM DTT, and 20% glycerol
Expression System:	<i>E. coli</i>
Format:	Aqueous buffer solution
Stability:	At least 6 months at -80°C. Avoid freeze/thaw cycles.
Storage:	-80°C
Genbank Accession:	NM_008562
MW:	34 kDa
Purity:	80%
Assay Conditions:	Figure 1: Inhibition of Mouse MCL-1 by A-1210477 was measured using the Mouse MCL-1 TR-FRET Assay Kit (BPS Bioscience #79928). Figure 2: Assay run according to MCL-1 TR-FRET Assay Kit (BPS Bioscience #79506). Enzyme mixture incubated for 1 hour at room temperature and TR-FRET measured at ex 340 nm / em 620 nm, 665 nm.
Applications:	Useful for the study of enzyme kinetics, screening inhibitors, and selectivity profiling.

Quality Control Data

4-20% SDS-PAGE Coomassie Staining

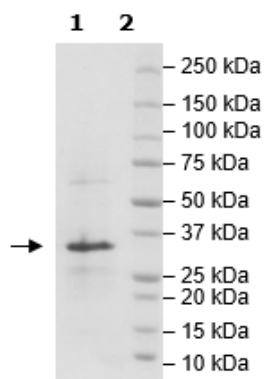


Figure 1: Inhibition of Mouse MCL-1 Binding

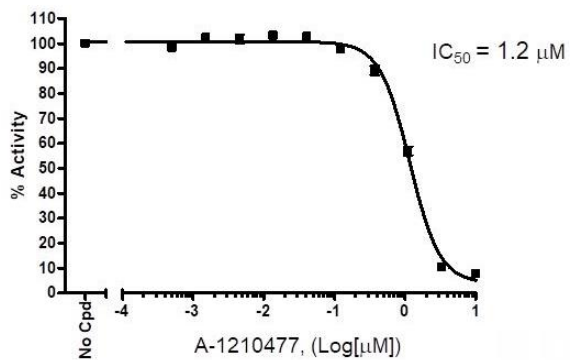


Figure 2: Mouse MCL-1:MCL-1 Ligand [Biotinylated] Binding

