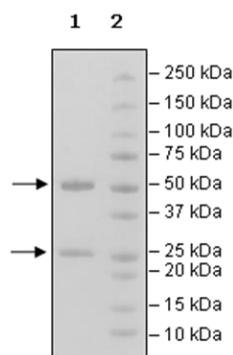


Product Information

Description:	Anti-CD20 Functional Antibody is a chimeric monoclonal antibody that recognizes human CD20. The antibody features the constant region of the human IgG1 isotype and the mouse variable region of rituximab (amino acids 142-184). This antibody is cytotoxic to WIL2-S cells in the presence of the rabbit complement system. The recombinant antibody was affinity purified.
Background:	CD20 is present in the membrane of mature, normal, and abnormal B cells, but not in the immature B cells. This expression pattern made it an attractive target for antibody-based lymphoma treatment as immature B cells will not be affected and can replenish the B cell population. Rituximab was the first anti-CD20 monoclonal antibody to reach the clinic, and since its commercialization it has led to a decrease in the number of deaths due to B cell malignancy.
Species:	Human
Host Species:	Mouse/Human
Isotype:	IgG1
Clonality:	Monoclonal
Concentration:	2.75 mg/ml
Expression System:	HEK293
Purity:	≥90%
Format:	Aqueous buffer solution.
Formulated In:	8 mM phosphate, pH 7.4, 110 mM NaCl, 2.2 mM KCl, and 20% glycerol
MW:	Heavy Chain: 51 kDa; Light Chain: 25 kDa
Stability:	At least 6 months at -80°C.
Storage:	-80°C
Instructions for Use:	Thaw on ice and gently mix prior to use. DO NOT VORTEX. Perform a quick spin before opening. Aliquot into small volumes and flash freeze for long term storage. Avoid multiple freeze/thaw cycles.
Assay Conditions:	The antibody was validated by treating WIL2-S cells with various concentrations of antibody in the presence of 10% rabbit complement. Cell viability was determined using AlamarBlue®.
Applications:	Detection of CD20 and functional studies involving CD20 in biochemical and cellular assays.

Quality Control Data

4-20% SDS-PAGE Coomassie Staining



Functional Assay

