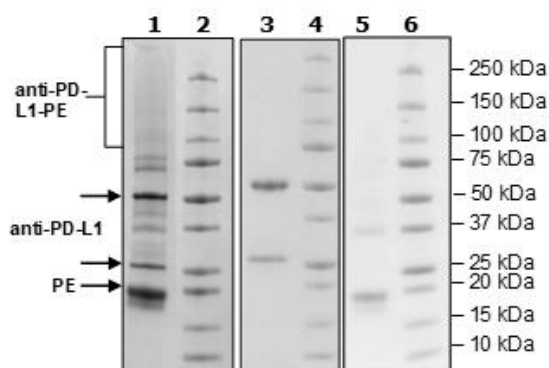


Product Information

Description:	R-Phycoerythrin-labeled anti-PD-L1 recombinant murine/human antibody recognizing the PD-1 binding region of human PD-L1.
Label:	R-Phycoerythrin (PE) is an oligomeric protein complex (270 kDa) from red algae that exhibits intensely bright red-orange fluorescence with high quantum yields. The complex consists of six heterodimers, α subunit (18 kDa) and β -subunit (20 kDa), and an additional γ -subunit (34 kDa). PE is covalently attached randomly through lysines on the target protein.
Concentration:	1.85 mg/ml
Host Species:	Human/Murine
Isotype:	IgG1 κ
Clonality:	Monoclonal
Formulated In:	8 mM phosphate pH 7.4, 110 mM NaCl, 2.2 mM KCl, 20% glycerol
Expression System:	HEK293
Format:	Aqueous buffer solution
Stability:	At least 12 months at -80°C. Avoid freeze/thaw cycles. Protect from light.
Storage:	-80°C
MW:	144 kDa + glycans + PE
Purity:	≥90%
Purification:	Protein A affinity chromatography from HEK293 supernatants.

Quality Control Data

4-20% SDS-Page Coomassie Staining



Lane 1: 8 µg anti-PD-L1-PE
Lane 3: 4 µg anti-PD-L1
Lane 5: 4 µg PE
Lane 2, 4, 6: Protein Marker