

## Data Sheet

### Anti-GFP Tag

Mouse Monoclonal Antibody  
Anti-GFP (Green Fluorescent Protein) Tag (GF28R)  
Catalog #: 25008

#### Specificity:

Recognizes native and denatured forms of GFP and its variants such as: EGFP, YFP, EYFP, and CFP

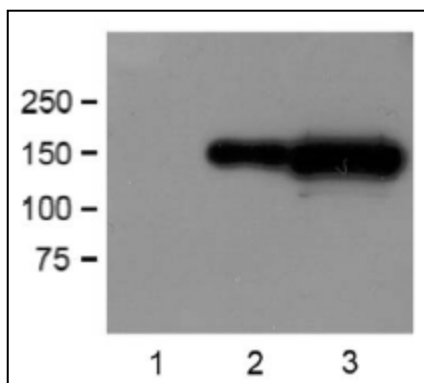
#### Immunogen:

GFP from the jellyfish *Aequorea victoria*  
N-terminal peptide-KLH conjugates

#### Applications:

Dot Blot, ELISA, IP, IS, WB

#### Image:



**Fig.** 1:1000 (1µg/mL) Ab dilution probed against HEK293 cells transfected with GFP-tagged protein vector: untransfected control (1), 1µg (2) and 10µg (3) of cell lysates used.

#### Clonality | Host Species | Isotype:

GF28R | Mouse | IgG2b

#### Formulation:

1mg/mL in 10mM PBS, pH 7.2, with 0.05% NaN<sub>3</sub>

#### Sensitivity:

WB (with ECL): 1-10 ng of purified GFP or GFP fusion proteins

#### Working Conditions:

WB (with ECL): 1:1000-3000 dilution (incubate for 1 hour at room temperature)  
IP: 1:50-200 dilution  
ICC: 1:500-2000 dilution  
For best results with other assays (e.g.: Dot Blot, ELISA, etc.), please determine optimal working dilution by titration test

#### Purification:

Protein A affinity chromatography from mouse ascites fluid

#### Storage and Stability:

Store at -20°C for up to 2 years. Centrifuge after first thaw to maximize product recovery. Aliquot to avoid repeated freeze-thaw cycles. Store aliquots at 4°C for 1-2 weeks

OUR PRODUCTS ARE FOR IN VITRO RESEARCH USE ONLY. NOT FOR DIAGNOSTIC OR THERAPEUTIC USE.

To place your order, please contact us by Phone **1.858.202.1401** Fax **1.858.481.8694**

Or you can Email us at: [support@bpsbioscience.com](mailto:support@bpsbioscience.com)

Please visit our website at: [www.bpsbioscience.com](http://www.bpsbioscience.com)