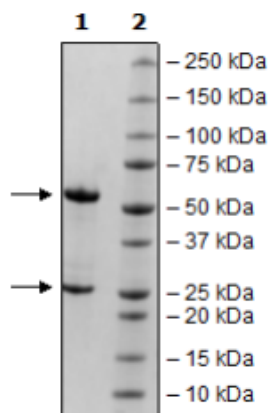


Product Information

Description:	Recombinant monoclonal anti-PSMA antibody which recognizes PSMA (prostate specific membrane antigen). This antibody has been affinity purified.
Species:	Human
Clonality:	Monoclonal
Concentration:	2.10 mg/ml
Expression System:	HEK293
Purity:	≥90%
Format:	Aqueous buffer solution.
Formulated In:	8 mM phosphate, pH 7.4, 110 mM NaCl, 2.2 mM KCl, and 20% glycerol
MW:	Heavy Chain: 52 kDa; Light Chain: 23 kDa + glycans
Glycosylation:	This antibody runs at a higher MW by SDS-PAGE due to glycosylation.
Stability:	At least 12 months at -80°C.
Storage:	-80°C
Instructions for Use:	Thaw on ice and gently mix prior to use. DO NOT VORTEX. Perform a quick spin before opening. Aliquot into small volumes and flash freeze for long term storage. Avoid multiple freeze/thaw cycles.
Assay Conditions:	The antibody was validated by measuring binding to PSMA antigen in ELISA. The PSMA protein (BPS Bioscience #100463) was coated onto a 96-well plate overnight at 4°C (50 µl/well at a concentration of 4 µg/ml in PBS). The plate was washed 3 times with Immuno Buffer 1 (BPS Bioscience #79311) and blocked using 100 µl of Blocking Buffer 2 (BPS Bioscience #79728) for 1 hour at room temperature. After removing the blocking buffer, 50 µl/well of purified anti-PSMA antibody (BPS Bioscience #101695), serially diluted in Blocking Buffer 2, was added and incubated for 30 minutes at room temperature. After 3 more washes, the plate was incubated with anti-human IgG Fc HRP, washed, and incubated with HRP Colorimetric Substrate (BPS Bioscience #79651). The reaction was stopped, and absorbance was read at 450 nm. The Blank value was subtracted from all values.
Applications:	Useful for studying the binding to PSMA in ELISA and in cellular assays.

Quality Control Data

4-20% SDS-PAGE Coomassie Staining



PSMA: Anti-PSMA Binding Assay

