

## Data Sheet

### Calmodulin 1 Protein, His-tag

Human, recombinant, N-terminal His -tag  
**Catalog#:** 81152  
**Lot#:** 160526                      **Conc.:** 0.2 mg/ml

**Formulated in:** 50 mM sodium phosphate, pH 7.0, 300 mM NaCl, 150 mM imidazole, 0.1 mM PMSF, 0.25 mM DTT, 25% glycerol.

**Stability:** ≥6 months at -80°C. Avoid freeze/thaw cycles. Storing diluted protein is not recommended, if necessary, use carrier protein (BSA 0.1 – 0.5%).

**References:**

1. Li, H. *et al.*, *FEBS Lett.* 2004; **13(559)**: 175-180.
2. Huang, M. *et al.*, *Cell Stress Chaperones.* 2009; **14(4)**: 343-353.

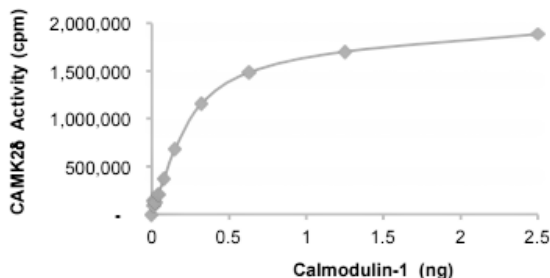
**Description:** Human Calmodulin 1, also known as CALM1, CALML2, CAMI, DD132, PHKD, GenBank Accession No. NM\_006888, full-length with an N-terminal His-tag, expressed in an *E. coli* cell expression system. MW = 17 kDa.

**Assay Conditions:** Varying amounts of calmodulin 25 ng CAMK2δ, 200 ng/μl autocamtide-2 peptide, 0.4 mM CaCl<sub>2</sub>, 50 μM ATP and trace [<sup>33</sup>P]-γ-ATP in 25 μl of reaction volume for 15 min at 30°C.

**Application:** Useful for studying calmodulin-dependent kinase kinetics *in vitro*.

### Quality Assurance

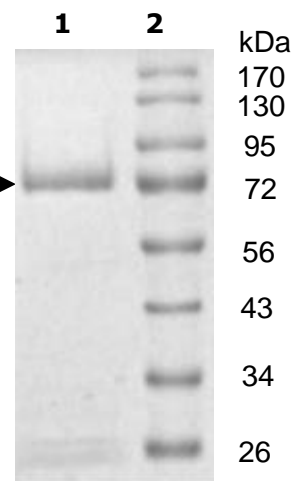
**Specific Activity**



**10% SDS-PAGE**  
**Coomassie staining**

**Lane 1:** → FGFR3  
**Lane 2:** Protein Marker

**MW:** 73kDa  
**Purity:** ≥95%



OUR PRODUCTS ARE FOR RESEARCH USE ONLY. NOT FOR DIAGNOSTIC OR THERAPEUTIC USE.

To place your order, please contact us by Phone **1.858.829.3082** Fax **1.858.481.8694**  
 Or you can Email us at: [info@bpsbioscience.com](mailto:info@bpsbioscience.com)  
 Please visit our website at: [www.bpsbioscience.com](http://www.bpsbioscience.com)