

## Data Sheet

### KYNU, His-Tag

Human, Recombinant, C-terminal His-Tag

**Catalog #:** 79485

**Lot #:** 180406

**Conc.:** 1.341 mg/ml

**Formulated in:** 40 mM Tris-HCl, pH 8.0, 110 mM NaCl, 2.2 mM KCl, 0.04% Tween20, 20% glycerol, 225mM imidazole, 2uM PLP, 2µM DTT

**Stability:** At least 6 months at  $-80^{\circ}\text{C}$ . Avoid freeze/thaw cycles. Protein may be diluted to  $\geq 100 \mu\text{g/ml}$  in PBS + glycerol and stored at  $-80^{\circ}\text{C}$ .

**References:**

1. Christensen, M., *et al.*, *JIMD*. 2007 Mar: 248-255.
2. Zhang, Y., *et al.*, *Circ Genom Precis Med*. 2018; **11(3)**.

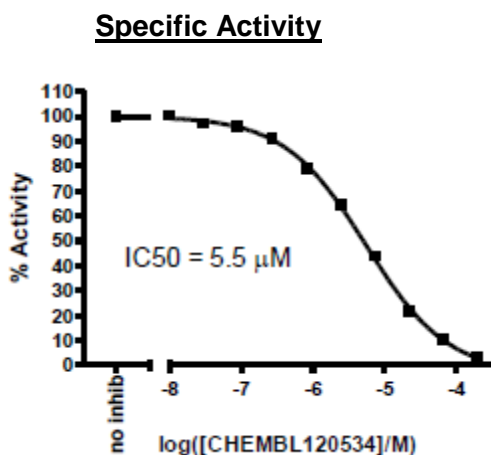
**Description:** Human secreted KYNU, also known as Kynureninase and L-Kynurenine hydrolase, with C-terminal His-Tag. GenBank Accession No. NM\_003937, a.a. 1-465 (end), expressed in Sf9 cells in a Baculovirus expression system. MW = 53 kDa.

**Specific Activity:**  $\geq 75 \text{ pmol/min}/\mu\text{g}$

**Assay Conditions:** Followed protocol of the Kynureninase Inhibitor Screening Assay Kit (BPS #79514).

**Applications:** Useful for the study of enzyme kinetics, screening inhibitors, and selectivity profiling.

### Quality Assurance



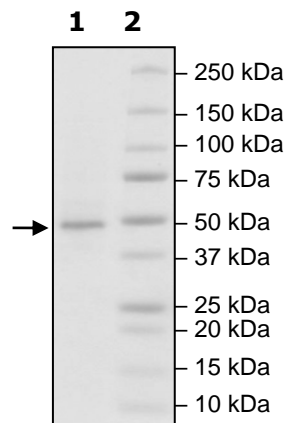
**4-20% SDS-PAGE  
Coomassie staining**

**Lane 1:**  
KYNU

**Lane 2:**  
Protein Marker

**Purity:**  $\geq 85\%$

**MW:** 53 kDa



OUR PRODUCTS ARE FOR RESEARCH USE ONLY. NOT FOR DIAGNOSTIC OR THERAPEUTIC USE.

To place your order, please contact us by Phone **1.858.829.3082** Fax **1.858.481.8694**  
 Or you can Email us at: [info@bpsbioscience.com](mailto:info@bpsbioscience.com)  
 Please visit our website at: [www.bpsbioscience.com](http://www.bpsbioscience.com)



6042 Cornerstone Court W, Ste B  
San Diego, CA 92121  
**Tel:** 1.858.829.3082  
**Fax:** 1.858.481.8694  
**Email:** [info@bpsbioscience.com](mailto:info@bpsbioscience.com)

## ***Sequence***

**KAMHVAQPAVVLASSRGIASFVCEYASPGKATEVRVTVLRQADSQVTEVCAATYMM  
GNELTFLDDSICTGTSSGNQVNLTIQGLRAMDTGLYICKVELMYPPPYLIGINGTQIY  
VIDPEPCPDSDFIEGRMDPKSCDKTHTCPPCPAPELLGGPSVFLFPPKPKDTLMISRTPEVTCVVVDVSHEDPEVKFNWYVDGVEVHNAKTKPREEQYNSTYRVVSVLTVLHQDWLNGKEYKCKVSNKALPAPIEKTISKAKGQPREPQVYTLPPSRDELTKNQVSLTCLVKGFYPSDIAVEWESNGQPENNYKTTTPVLDSDGSFFLYSKLTVDKSRWQQGNVFSFSVMHEALHNHYTQKSLSLSPGK**

**Black:** CTLA4 (a.a. 36-162)

**Green:** linker

**Red:** Fc of human IgG1 (a.a. 100-330)

OUR PRODUCTS ARE FOR RESEARCH USE ONLY. NOT FOR DIAGNOSTIC OR THERAPEUTIC USE.

To place your order, please contact us by Phone **1.858.829.3082** Fax **1.858.481.8694**  
Or you can Email us at: [\*\*info@bpsbioscience.com\*\*](mailto:info@bpsbioscience.com)  
Please visit our website at: [\*\*www.bpsbioscience.com\*\*](http://www.bpsbioscience.com)