

## Data Sheet

### LILRB1, Fc-Fusion (IgG1), Avi-Tag, Biotin-Labeled

Human, Recombinant, C-terminal Fc-Avi-Tag,  
Biotin-Labeled

**Catalog #:** 79474

**Lot#:** 180223

**Conc.:** 1.47 mg/ml

**Formulated in:** 8 mM Phosphate, pH 7.4,  
110 mM NaCl, 2.2 mM KCl, and 20%  
glycerol.

**Stability:** At least 6 months at  $-80^{\circ}\text{C}$ . Avoid  
freeze/thaw cycles. Storing diluted protein is  
not recommended, if necessary, use carrier  
protein (BSA 0.1 – 0.5%).

**References:**

1. Apps, R., *et al.*, *Immunology*. 2007  
Jun 2007;**37(7)**: 1924-1937.
2. Kuroki, K., *et al.*, *Human Molecular  
Genetics*. Aug 2005; **14(16)**: 2469-  
2480.

**Description:**

Human LILRB1, also known Leukocyte immunoglobulin-like receptor subfamily B member 1, CD85J, ILT2, and LIR-1, GenBank Accession No. NM\_006669, a.a 24-458, with C-terminal Avi-Tag™ fused to the Fc portion of Human IgG1 and expressed in a HEK293 cell expression system. MW = 76 kDa. This protein runs at a higher apparent M.W. by SDS-PAGE due to glycosylation. This protein is enzymatically biotinylated using Avi-Tag™ technology.

### Quality Assurance

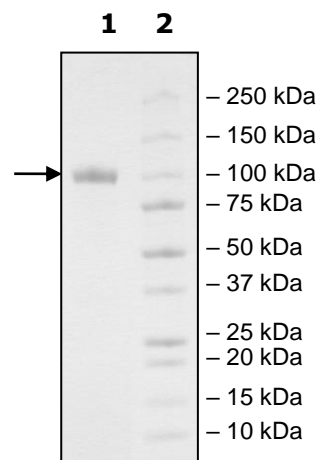
**4-20% SDS-PAGE  
Coomassie staining**

**Lane 1:**  
4µg LILRB1

**Lane 2:**  
Protein Marker

**MW:**  
75.8kDa + glycans

**Purity:** ≥90%



OUR PRODUCTS ARE FOR RESEARCH USE ONLY. NOT FOR DIAGNOSTIC OR THERAPEUTIC USE.

To place your order, please contact us by Phone **1.858.829.3082** Fax **1.858.481.8694**

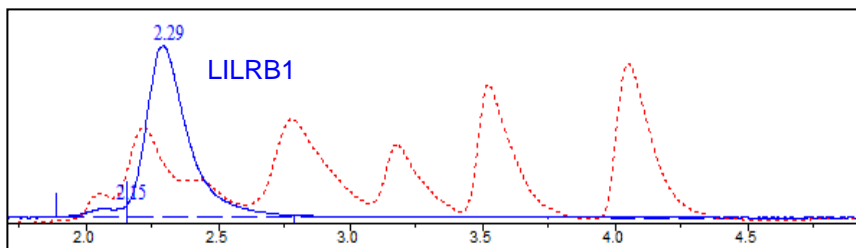
Or you can Email us at: [info@bpsbioscience.com](mailto:info@bpsbioscience.com)

Please visit our website at: [www.bpsbioscience.com](http://www.bpsbioscience.com)



6042 Cornerstone Court W, Ste B  
San Diego, CA 92121  
**Tel:** 1.858.829.3082  
**Fax:** 1.858.481.8694  
**Email:** info@bpsbioscience.com

### Gel Filtration Curve



<10% Aggregation

OUR PRODUCTS ARE FOR RESEARCH USE ONLY. NOT FOR DIAGNOSTIC OR THERAPEUTIC USE.

To place your order, please contact us by Phone **1.858.829.3082** Fax **1.858.481.8694**  
Or you can Email us at: [info@bpsbioscience.com](mailto:info@bpsbioscience.com)  
Please visit our website at: [www.bpsbioscience.com](http://www.bpsbioscience.com)