

Data Sheet

LILRB1, Fc-Fusion (IgG1), Avi-Tag

Human, Recombinant, C-terminal Fc-Avi-Tag

Catalog #: 79473

Lot#: 180221

Conc.: 1.24 mg/ml

Formulated in: 8 mM Phosphate, pH 7.4, 110 mM NaCl, 2.2 mM KCl, and 20% glycerol.

Stability: At least 6 months at -80°C . Avoid freeze/thaw cycles. Storing diluted protein is not recommended, if necessary, use carrier protein (BSA 0.1 – 0.5%).

References:

1. Apps, R., *et al.*, *Immunology*. 2007 Jun 2007;**37(7)**: 1924-1937.
2. Kuroki, K., *et al.*, *Human Molecular Genetics*. Aug 2005; **14(16)**: 2469-2480.

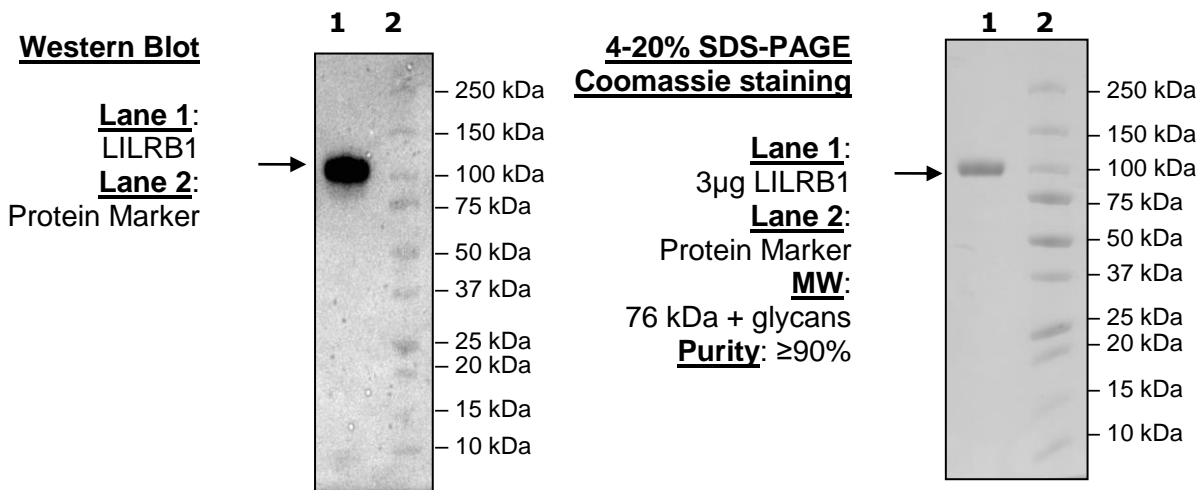
Description:

Human LILRB1, also known Leukocyte immunoglobulin-like receptor subfamily B member 1, CD85J, ILT2, and LIR-1, GenBank Accession No. NM_006669, a.a 24-458, with C-terminal Avi-Tag™ fused to the Fc portion of Human IgG1 and expressed in a HEK293 cell expression system. MW = 76 kDa. This protein runs at a higher apparent M.W. by SDS-PAGE due to glycosylation.

Application:

Useful as a positive control for western blot studies.

Quality Assurance



OUR PRODUCTS ARE FOR RESEARCH USE ONLY. NOT FOR DIAGNOSTIC OR THERAPEUTIC USE.

To place your order, please contact us by Phone **1.858.829.3082** Fax **1.858.481.8694**

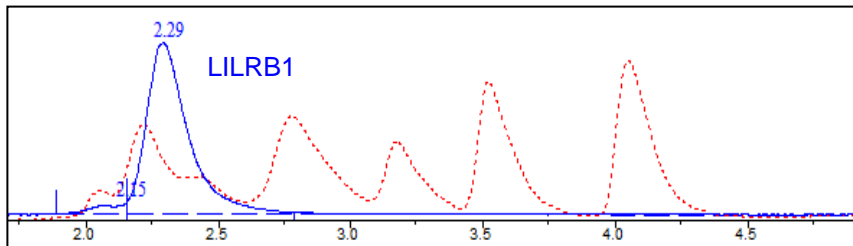
Or you can Email us at: info@bpsbioscience.com

Please visit our website at: www.bpsbioscience.com



6042 Cornerstone Court W, Ste B
San Diego, CA 92121
Tel: 1.858.829.3082
Fax: 1.858.481.8694
Email: info@bpsbioscience.com

Gel Filtration Curve



<10% Aggregation

OUR PRODUCTS ARE FOR RESEARCH USE ONLY. NOT FOR DIAGNOSTIC OR THERAPEUTIC USE.

To place your order, please contact us by Phone **1.858.829.3082** Fax **1.858.481.8694**
Or you can Email us at: info@bpsbioscience.com
Please visit our website at: www.bpsbioscience.com