

## Data Sheet

### **CERK, FLAG-Tag (Mouse)**

Mouse, Recombinant, C-terminal FLAG-tag

**Catalog #:** 79413

**Lot#:** 180227

**Conc.:** 0.21 mg/ml

**Formulated in:** 40 mM Tris-HCl, pH 8.0, 110 mM NaCl, 2.2 mM KCl, 20% glycerol and 100ug/ml flag peptide

**Stability:** At least 6 months at  $-80^{\circ}\text{C}$ . Avoid freeze/thaw cycles. Protein may be diluted to  $\geq 100 \mu\text{g/ml}$  in PBS + glycerol and stored at  $-80^{\circ}\text{C}$ .

**References:**

1. Sugiura, M. *et al.*, *JBC*. **277**, 23294-23300 (2002)
2. Majjalieh, S.M., *et al.*, *JBC*. **264**, 14354-14360 (1989)

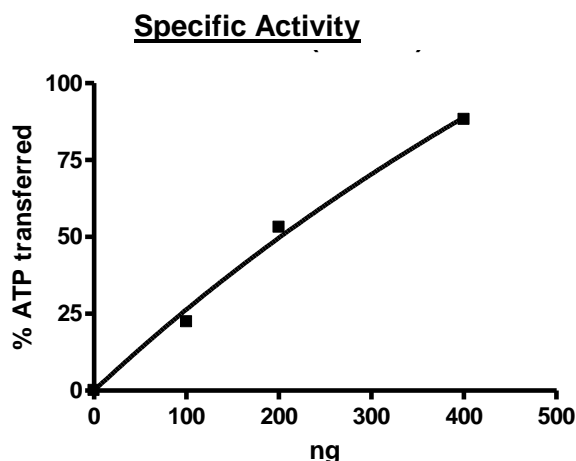
**Description:** Mouse CERK, also known as ceramide kinase, GenBank Accession No. NM\_00113486, 1-531 (end) with C-terminal Flag tag, MW= 61 kDa, expressed in baculovirus expression system.

**Specific Activity:**  $\geq 10$  pmole/min/ $\mu\text{g}$

Assay conditions: CERK activity was measured at  $37^{\circ}\text{C}$  for 25 min in a buffer (20 mM HEPES pH7.2, 80 mM KCl, 3 mM  $\text{CaCl}_2$ , 10 mM  $\text{MgCl}_2$ , 2 mM DTT, 5  $\mu\text{M}$  ATP) using a  $\mu$ -Octylglucoside mixed micellar assay with 100  $\mu\text{M}$  Ceramide (BPS# 40618). ATP reduction was detected using Kinase-Glo<sup>®</sup> Luminescent Kinase Assay Platform (Promega, Madison, WI).

**Application:** Useful for the study of enzyme kinetics, screening inhibitors, and selectivity profiling.

## **Quality Assurance**

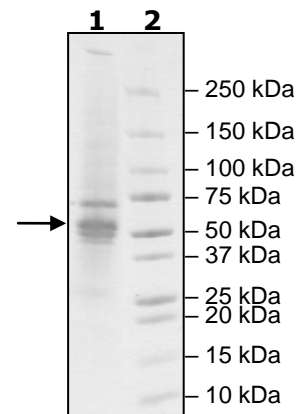


4-20% SDS-PAGE  
Coomassie staining

**Lane 1:**  
2  $\mu\text{g}$  mouse CERK

**Lane 2:**  
Protein Marker

**MW:** 61 kDa  
**Purity:**  $\geq 51\%$



OUR PRODUCTS ARE FOR RESEARCH USE ONLY. NOT FOR DIAGNOSTIC OR THERAPEUTIC USE.

To place your order, please contact us by Phone **1.858.829.3082** Fax **1.858.481.8694**

Or you can Email us at: [info@bpsbioscience.com](mailto:info@bpsbioscience.com)

Please visit our website at: [www.bpsbioscience.com](http://www.bpsbioscience.com)