

Data Sheet

CTLA4 (Mouse), Fc-Fusion (Human), Avi-Tag

Mouse, Recombinant, Fc fusion protein,
C-terminal Avi-Tag

Catalog #: 79062

Lot #: 170524

Conc.: 1.23 mg/ml

Formulated in: 8 mM Phosphate, pH 7.4,
110 mM NaCl, 2.2 mM KCl, and 20%
glycerol

Stability: At least 6 months at -80°C . Avoid
freeze/thaw cycles. Protein may be diluted to
 $\geq 100 \mu\text{g/ml}$ in PBS + glycerol and stored at
 -80°C .

Description:

Mouse secreted CTLA4, with C-terminal
Avi-Tag fused at the C-terminus with the Fc
portion of human IgG1, also known as
Cytotoxic T-lymphocyte-associated protein
4 and CD152. GenBank Accession No.
NM_009843, a.a. 36-161 expressed in a
HEK293 cell expression system. MW = 42
kDa. This protein runs at a higher MW by
SDS-PAGE due to glycosylation.

References:

1. Dilek, N., et al., PLoS ONE. 2013;
8(12): e83139.
2. Leach, D.R., et al., Science. 1996;
271(5256):1734-1736.

Quality Assurance

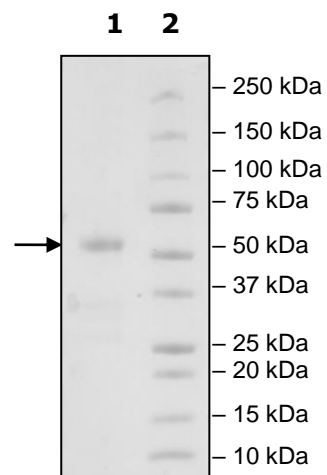
4-20% SDS-PAGE Coomassie staining

Lane 1:
3 μg CTLA4

Lane 2:
Protein Marker

MW: 42 kDa +glycans

Purity: $\geq 84\%$



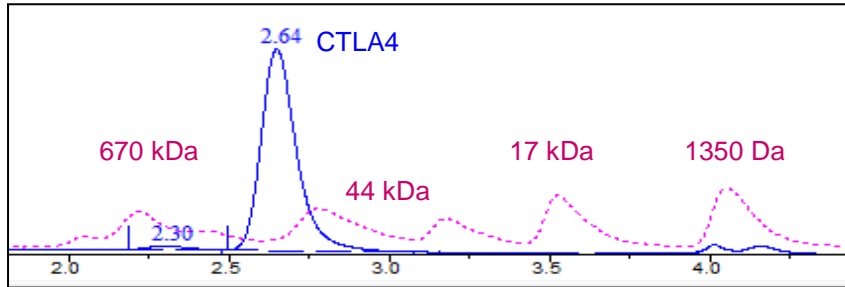
OUR PRODUCTS ARE FOR RESEARCH USE ONLY. NOT FOR DIAGNOSTIC OR THERAPEUTIC USE.

To place your order, please contact us by Phone **1.858.829.3082** Fax **1.858.481.8694**

Or you can Email us at: info@bpsbioscience.com

Please visit our website at: www.bpsbioscience.com

Gel Filtration Trace



<10% Aggregation

Sequence

EAIQVTQPSVVLASSHGVASFPC EYSPSHNTDEV RVTVLRQTNDQMTEVCATTFTEKNTVGF LDYPFCSGTFNESRVNLTIQGLRAVD TGLYLCKVELMYPPPYFVGMGNGTQIYVIDPEPCPDSDI EGRMDPKSCDKTHTCPPCPAPELLGGPSVFLFPPKPKDTLMISRTPEVTCVVDVSHEDPEVKFNWYVDGVEVHNAKTKPREEQYNSTYRVVSVLTVHLHQDWLNGKEYKCKVSNKALPAPIEKTISKAKGQPREPQVYTLPPSRDELTKNQVSLTCLVKGFYPSDIAVEWESNGQPENNYKTTTPVLDSDGSFFLYSKLTVDKSRWQQGNV FSCSVMHEALHNHYTQKLSLSLSPGKGGGLNDI FEAQKIEWHE

Black: mCTLA4 (aa 36-161)

Green: Linker

Red: Fc of human IgG1 (aa 100-330)

Blue: Avi

OUR PRODUCTS ARE FOR RESEARCH USE ONLY. NOT FOR DIAGNOSTIC OR THERAPEUTIC USE.

To place your order, please contact us by Phone **1.858.829.3082** Fax **1.858.481.8694**

Or you can Email us at: info@bpsbioscience.com

Please visit our website at: www.bpsbioscience.com