

Data Sheet

Histone H3

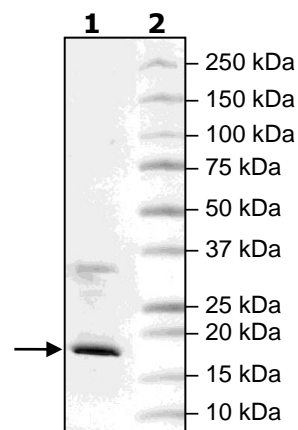
Human, Recombinant

Catalog #: 79055-2**Lot #:** 170519**Conc.:** 1.05 mg/ml**Formulated in:** 8 mM PBS pH 7.4, 110 mM NaCl, 2.2 mM KCl and 20% glycerol**Stability:** At least 6 months at -80°C . Avoid freeze/thaw cycles. Storing diluted protein is not recommended, if necessary, use carrier protein (BSA 0.1 – 0.5%).**References:**

1. Loyola, A., *et al.*, *Mol. Cell.* 2006; **24(2)**: 309-316.
2. Khuong-Quang, D-A., *et al.*, *Acta. Neuropathol.* 2012; 10.1007/s00401-012-0998-0.

Description: Human Histone 3 (HIST1H3E), GenBank Accession No. NM_003532, a.a. 1-136(end), MW = 15 kDa, expressed in an *E. coli* expression system.**Application:** Useful as a substrate for methyltransferases or acetyltransferases and for screening inhibitors and selectivity profiling for drug discovery.

Quality Assurance

**4-20% SDS-PAGE
Coomassie staining****Lane 1:**
2 μg Histone H3**Lane 2:**
Protein Marker**MW:** 15 kDa
Purity: $\geq 86\%$ 

OUR PRODUCTS ARE FOR RESEARCH USE ONLY. NOT FOR DIAGNOSTIC OR THERAPEUTIC USE.

To place your order, please contact us by Phone **1.858.829.3082** Fax **1.858.481.8694**Or you can Email us at: info@bpsbioscience.comPlease visit our website at: www.bpsbioscience.com



6042 Cornerstone Court West, Suite B
San Diego, CA 92121
Tel: 1.858.829.3082
Fax: 1.858.481.8694
Email: info@bpsbioscience.com

Sequence

MARTKQTARKSTGGKAPRKQLATKAARKSAPATGGVKKPHRYRPGTVALREIRRY
QKSTELLIRKLPFQRLVREIAQDFKTDLRFQSSAVMALQEACEAYLVGLFEDTNL
CAIHAKRVTIMPKDIQLARRIGERA

Black: HistoneH3 (aa 1-136(end))

OUR PRODUCTS ARE FOR RESEARCH USE ONLY. NOT FOR DIAGNOSTIC OR THERAPEUTIC USE.

To place your order, please contact us by Phone **1.858.829.3082** Fax **1.858.481.8694**
Or you can Email us at: info@bpsbioscience.com
Please visit our website at: www.bpsbioscience.com