

Data Sheet

LAG3 (CD223) (Mouse), Fc(Human) Avi-Tag, Biotin

Mouse, Recombinant, Human Fc fusion protein,
with C-terminal Avi-tag™

Catalog #: 79003

Lot #: 170504

Conc.: 0.41 mg/ml

Formulated in: 20 mM NaOAC, pH 5.5, 500 mM NaCl, 0.02% Tween 20 and 10% glycerol.

Stability: At least 6 months at -80°C . Avoid freeze/thaw cycles. Protein may be diluted to $\geq 100 \mu\text{g/ml}$ in PBS + glycerol and stored at -80°C .

References:

1. Byrnes, *et al.*, *Cytometry A*. 2012 Sep; **81(2)**:165-8.
2. Di Carlo, *et al.*, *J. Pathol.* 2005 Jan; **205(1)**:82-91.

Description:

Mouse LAG3, Fc fusion protein (Human), also known as Lymphocyte-Activation Gene 3 and CD223, with C-terminal Avi-Tag™. GenBank Accession No. NM_008479, a.a. 23-442 expressed in a HEK293 cell expression system and enzymatically biotin-labeled using Avi-tag™ technology. MW = 74 kDa.

Application:

Useful for studying protein binding and screening small molecules.

Quality Assurance

**4-20% SDS-PAGE
Coomassie staining**

Lane 1:

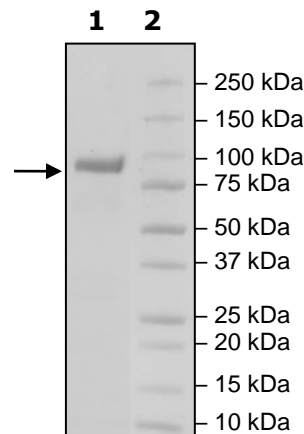
3 μg LAG3

Lane 2:

Protein Marker

MW: 74 kDa

Purity: $\geq 90\%$



OUR PRODUCTS ARE FOR RESEARCH USE ONLY. NOT FOR DIAGNOSTIC OR THERAPEUTIC USE.

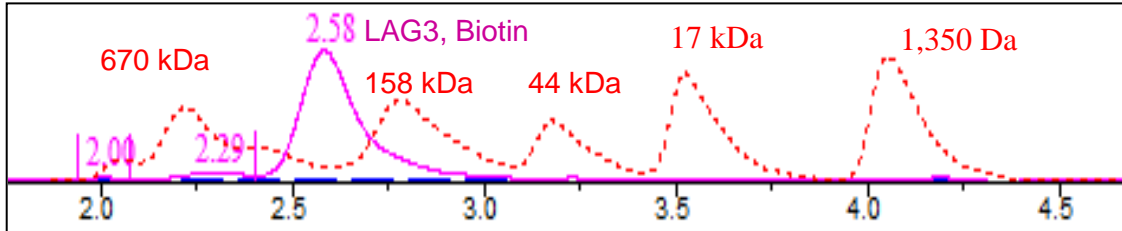
To place your order, please contact us by Phone **1.858.829.3082** Fax **1.858.481.8694**

Or you can Email us at: info@bpsbioscience.com

Please visit our website at: www.bpsbioscience.com

Gel Filtration Trace

<10% Aggregation



Sequence

SGPGKELPVVWAQEGAPVHLPCSLKSPNLDPNFLRRGGVIWQHQPDSGQPTPIPA
 LDLHQGMPSRQPAPGRYTVLSVAPGGLRSGRQPLPHVQLEERGLQRGDFSLWL
 RPALRTDAGEYHATVRLPNRALSCSLRLRVGQASMIASPSGVLKLSDWVLLNCSF
 SRPDRPVSVHWFQGNRVVPVNSPRHFLAETFLLLPQVSPLDSTWGCVLTYRDG
 FNVSITYNLKVLGLEPVAPLTVYAAEGSRVELPCHLPPGVGTPSLLIAKWTPPGG
 GPPELVAGKSGNFTLHLEAVGLAQAGTYTCSIHLQGGQLNATVTLAVITVTPKSF
 GLPGSRGKLLCEVTPASGKERFVWRPLNLSRSCPGPVLEIQEARLLAERWQCQL
 YEQRLLGATVYAAESSGAHSARRISGDLKGGHL**IEGRMDPKSCDKTHTCP**PCP
APELLGGPSVFL**FPPKPKDTLMI**SRTPEVTCVVVDVSHEDPEVKFNWYVDGVEVH
 NAKTKPREEQYNSTYRVVSVLTVLHQDWLNGKEYKCKVSNKALPAPIEKTISKAK
 GQPREPQVYTLPPSRDELTKNQVSLTCLVKGFYPSDIAVEWESNGQPENNYKTP
 PVLDSGDGSFFLYSKLTVDKSRWQQGNVVFSCSVMHEALHNHYTQKSLSLSPGKGGG
 LNDIFEAQKIEWHE

Black: Mouse LAG3 (aa 23-442)

Red: Linker

Blue: Human Fc

Green: Avi

OUR PRODUCTS ARE FOR RESEARCH USE ONLY. NOT FOR DIAGNOSTIC OR THERAPEUTIC USE.

To place your order, please contact us by Phone **1.858.829.3082** Fax **1.858.481.8694**
 Or you can Email us at: info@bpsbioscience.com
 Please visit our website at: www.bpsbioscience.com