

Data Sheet

TIM-4, Avi-His-Tag

Human, Recombinant, C-terminal Avi-His-Tag
Catalog#: 72513
Lot#: 170523 **Conc.:** 0.41 mg/ml

Formulated in: 8 mM Phosphate, pH 7.4, 110 mM NaCl, 2.2 mM KCl, and 20% glycerol.

Stability: At least 6 months at -80°C . Avoid freeze/thaw cycles. Protein may be diluted to $\geq 100 \mu\text{g/ml}$ in PBS + glycerol and stored at -80°C .

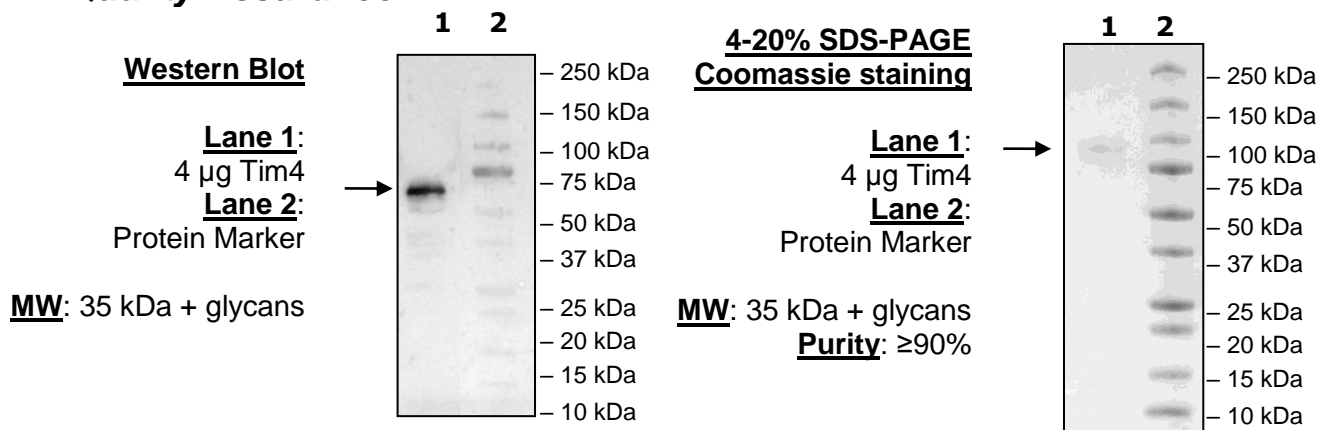
References:

1. Miyanishi, M. *et al.*, *Nature*. 2007; 435-9.
2. Hartt, J. *et al.*, *Nature Immunology*. 2005; **6**: 455-64.

Description: Human TIM-4, also known as T-cell immunoglobulin, mucin domain containing 4, TIMD-4, and T-cell membrane protein 4 with a C-terminal Avi-His-Tag. GenBank Accession No. NM_138379, a.a. 25-315 expressed in a HEK293 cell expression system. MW = 35 kDa. This protein runs at a higher MW by SDS-PAGE due to glycosylation.

Applications: Useful for western blot studies.

Quality Assurance



OUR PRODUCTS ARE FOR RESEARCH USE ONLY. NOT FOR DIAGNOSTIC OR THERAPEUTIC USE.

To place your order, please contact us by Phone **1.858.829.3082** Fax **1.858.481.8694**
 Or you can Email us at: info@bpsbioscience.com
 Please visit our website at: www.bpsbioscience.com



6042 Cornerstone Court W, Ste B
San Diego, CA 92121
Tel: 1.858.829.3082
Fax: 1.858.481.8694
Email: info@bpsbioscience.com

Sequence

ETVVTEVLGHRVTLPCLYSSWSHNSNSMCWGKDQCPYSGCKEALIRTDGMRVTSR
KSAKYRLQGTIPRGDVSLTILNPSESDSGVYCCRIEVPWFNDVKINVRLNLQRA
STTTHTATTTTRRTTTTSPTTTRQMTTTPAALPTTVVTTPLDITGTPLOMTTIA
VFTTANTCLSLTPSTLPEEATGLLTPEPSKEGPILTAESETVLPSSWSSVESTS
ADTVLLTSKESKVWDLPTSHVSMWKTSDSVSSPQPGASDTAVPEQNKTTKTGQM
DGI PMSMKNEMPI SQL **GLNDI FEAQKIEWHE** **HHHHHHHHHH**

Black: Tim-4 (aa 25-315)

Red: Avi

Blue: His

OUR PRODUCTS ARE FOR RESEARCH USE ONLY. NOT FOR DIAGNOSTIC OR THERAPEUTIC USE.

To place your order, please contact us by Phone **1.858.829.3082** Fax **1.858.481.8694**

Or you can Email us at: [**info@bpsbioscience.com**](mailto:info@bpsbioscience.com)

Please visit our website at: [**www.bpsbioscience.com**](http://www.bpsbioscience.com)