

## Data Sheet

### PD-L1 (Human), Fc fusion (Mouse IgG2a)

Human, Recombinant, C-terminal Fc fusion  
**Catalog #:** 71999  
**Lot #:** 160120                      **Conc.:** 2.81 mg/mL

**Formulated in:** 8 mM phosphate, pH 7.4, 110 mM NaCl, 2.2 mM KCl, and 20% glycerol

**Stability:** At least 6 months at  $-80^{\circ}\text{C}$ . Avoid freeze/thaw cycles. Protein may be diluted to  $\geq 100 \mu\text{g/ml}$  in PBS + glycerol and stored at  $-80^{\circ}\text{C}$ .

**References:**

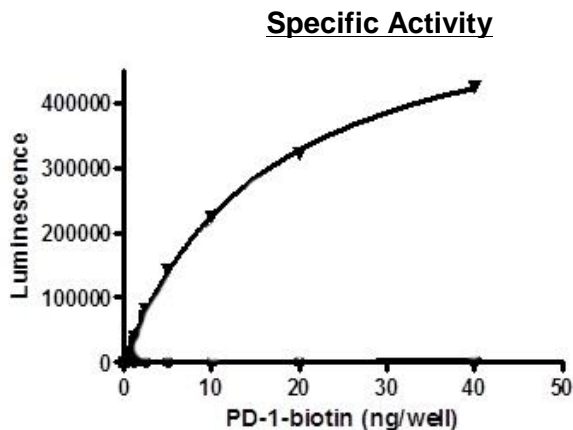
1. Freeman, G.J., *et al.*, *J Exp Med.* 2000 Oct 2;**192(7)**:1027-34.
2. Dong, H., *et al.*, *Nat Med.* 1999 Dec;**5(12)**:1365-9.

**Description:** Human secreted Programmed Cell Death 1 Ligand 1 (PD-L1)-Fc fusion protein, also known as CD274 and B7 homolog 1 (B7-H1), GenBank Accession No. NM\_014143, amino acids 19-239, fused at the C-terminus with the Fc portion of mouse IgG2a, expressed in a HEK293 cell expression system. MW = 53 kDa.

**Assay Conditions:** Add 50  $\mu\text{L}$  of PD-1-Biotin in assay buffer (PBS with 0.1% BSA) to the wells precoated with PD-L1 on a white maxisorp plate. Incubate the reaction mixture at room temperature for 2 hours. Wash and block wells. Then add streptavidin-HRP and incubate for 1 hour. Finally, add HRP chemiluminescent substrates and read luminescence.

**Application:** Useful for the study of protein-protein interaction and *in vitro* and *in vivo* protein function.

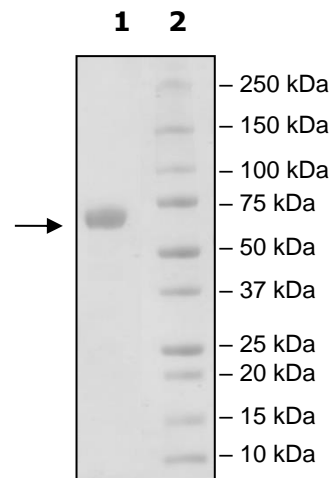
### Quality Assurance



**4-20% SDS-PAGE  
 Coomassie staining**

**Lane 1:**  
 4  $\mu\text{g}$  PD-L1  
**Lane 2:**  
 Protein Marker

**MW:** 53 kDa  
**Purity:**  $\geq 90\%$



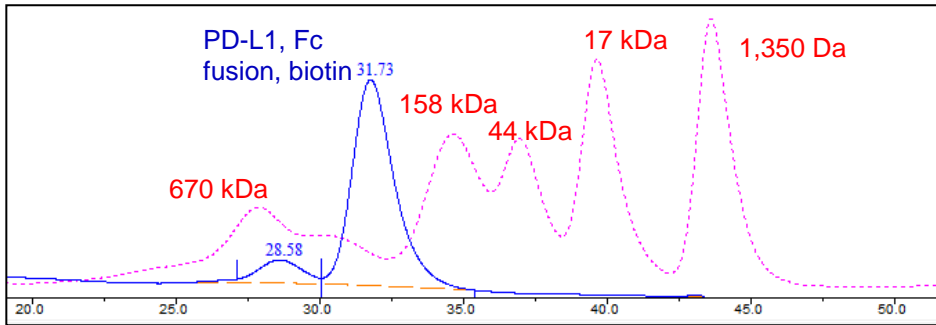
OUR PRODUCTS ARE FOR RESEARCH USE ONLY. NOT FOR DIAGNOSTIC OR THERAPEUTIC USE.

To place your order, please contact us by Phone **1.858.829.3082** Fax **1.858.481.8694**  
 Or you can Email us at: [info@bpsbioscience.com](mailto:info@bpsbioscience.com)  
 Please visit our website at: [www.bpsbioscience.com](http://www.bpsbioscience.com)



6042 Cornerstone Court W, Ste B  
San Diego, CA 92121  
**Tel:** 1.858.829.3082  
**Fax:** 1.858.481.8694  
**Email:** info@bpsbioscience.com

### Gel Filtration Curve



< 10% Aggregation

OUR PRODUCTS ARE FOR RESEARCH USE ONLY. NOT FOR DIAGNOSTIC OR THERAPEUTIC USE.

To place your order, please contact us by Phone **1.858.829.3082** Fax **1.858.481.8694**  
Or you can Email us at: [info@bpsbioscience.com](mailto:info@bpsbioscience.com)  
Please visit our website at: [www.bpsbioscience.com](http://www.bpsbioscience.com)