

Data Sheet

IgG4, Fc

Human, Recombinant

Catalog #: 71457

Lot #: 160823

Conc.: 0.87 mg/ml

Formulated in: 8 mM phosphate, 110 mM NaCl, 2.2 mM KCl, pH 7.4, and 20% glycerol.

Stability: At least 6 months at -80°C . Avoid freeze/thaw cycles. Protein may be diluted to $\geq 100 \mu\text{g/ml}$ in PBS + glycerol and stored at -80°C .

References:

1. Kamisawa, T, *et al.*, *Journal of Gastroenterology*. 2003 Oct; **38(10)**: 982-984.
2. Hamano, H., *et al.*, *New Eng. J. Med.* 2001 Mar; **344**: 732-738.

Description: Fc region of human immunoglobulin G4 (IgG4) protein, a.a. 99-327, Genbank Accession #P01861, expressed in an HEK293 cell expression system. MW = 27 kDa.

Application: Useful as an isotype control for studies using human IgG4 antibodies.

Quality Assurance

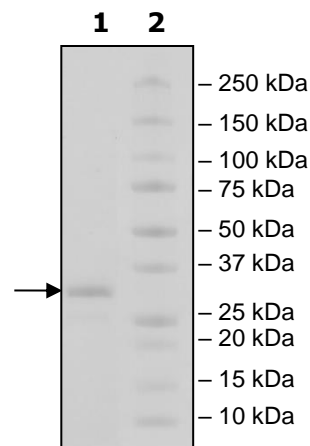
4-20% SDS-PAGE Coomassie staining

Lane 1:
3 μg IgG4, Fc

Lane 2:
Protein Marker

MW:
27 kDa

Purity: $\geq 90\%$



OUR PRODUCTS ARE FOR RESEARCH USE ONLY. NOT FOR DIAGNOSTIC OR THERAPEUTIC USE.

To place your order, please contact us by Phone **1.858.829.3082** Fax **1.858.481.8694**

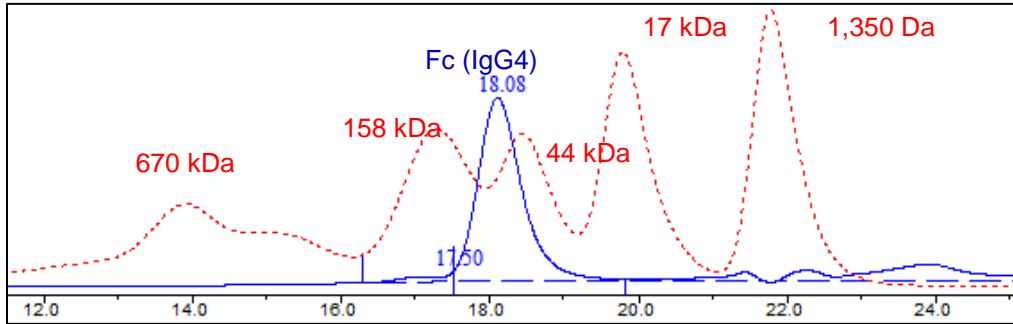
Or you can Email us at: info@bpsbioscience.com

Please visit our website at: www.bpsbioscience.com



6042 Cornerstone Court W, Ste B
San Diego, CA 92121
Tel: 1.858.829.3082
Fax: 1.858.481.8694
Email: info@bpsbioscience.com

Gel Filtration Curve



< 10% Aggregation

OUR PRODUCTS ARE FOR RESEARCH USE ONLY. NOT FOR DIAGNOSTIC OR THERAPEUTIC USE.

To place your order, please contact us by Phone **1.858.829.3082** Fax **1.858.481.8694**
Or you can Email us at: info@bpsbioscience.com
Please visit our website at: www.bpsbioscience.com