

## Data Sheet

### **PD-L1 (Q66A), Fc fusion, Biotin-labeled**

Human, recombinant, Fc fusion protein  
with C-terminal Avi-tag™

**Catalog #:** 71316

**Lot #:** 150715

**Conc.:** 1.31 mg/ml

**Formulated in:** 8 mM Phosphate, pH 7.4,  
110 mM NaCl, 2.2 mM KCl, and 20%  
glycerol

**Stability:** At least 6 months at -80 °C. *Avoid freeze/thaw cycles. Protein may be diluted to ≥ 100 µg/ml in PBS + glycerol and stored at -80 °C.*

**References:**

1. Freeman, G.J., *et al.*, *J Exp Med.* 2000 Oct 2;**192(7)**:1027-34.
2. Dong, H., *et al.*, *Nat Med.* 1999 Dec;**5(12)**:1365-9.

**Description:** Human secreted Programmed Cell Death 1 Ligand 1 (PD-L1)-Fc fusion protein, also known as CD274 and B7 homolog 1 (B7-H1) with a Q56A mutation, GenBank Accession No. NM\_014143, amino acids 19-239, fused at the C-terminus with the Fc portion of human IgG1, with C-terminal Avi-tag™ expressed in a HEK293 cell expression system and enzymatically biotin-labeled using Avi-tag™ technology. MW = 54 kDa.

**Application:**

Useful for the study of protein-protein interaction, epitope mapping, and *in vitro* and *in vivo* protein function.

## **Quality Assurance**

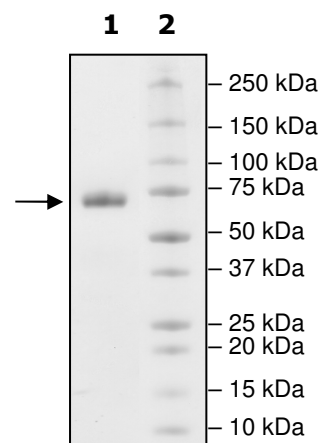
**4-20% SDS-PAGE  
Coomassie staining**

**Lane 1:**  
3 µg PD-L1

**Lane 2:**  
Protein Marker

**MW:** 54kDa+glycans

**Purity:** ≥90%



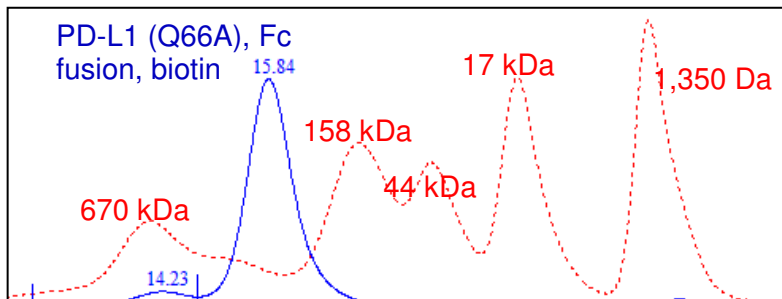
OUR PRODUCTS ARE FOR RESEARCH USE ONLY. NOT FOR DIAGNOSTIC OR THERAPEUTIC USE.

To place your order, please contact us by Phone **1.858.829.3082** Fax **1.858.481.8694**

Or you can Email us at: [info@bpsbioscience.com](mailto:info@bpsbioscience.com)

Please visit our website at: [www.bpsbioscience.com](http://www.bpsbioscience.com)

**Gel Filtration Curve**



< 10%  
 Aggregates

**Sequence:**

FTVTVPKDLYVVEYGSNMTIECKFPVEKQLDLAALIVYWEMEDKNI I **A**FVHGEECLKVQHSSYRQ  
 RARLLKQLSLGNAAALQITDVKLQDAGVYRCMISYGGADYKRITVKVNAPYNKINQRILVVDVPT  
 SEHELTCQAEGYPKAEVIWTSSDHQVLSGKTTTTNSKREEKLFNVTSTLRINTTNEIFYCTFRR  
 LDPEENHTAELVIPELPLAHPPNERT **DIEGRMDPKSCDKTHTCPPCPAPPELLGGPSVFLFPPKPK**  
**DTLMI**SRTPEVTCVVVDVSHEDPEVKFNWYVDGVEVHNAKTKPREEQYNSTYRVVSVLTVLHQDW  
 LNGKEYKCKVSNKALPAPIEKTI SKAKGQPREPQVYTLPPSREEMTKNQVSLTCLVKGFYPSDIA  
 VEWESNGQPENNYKTPPVLDSDGSFFLYSKLTVDKSRWQQGNVVFSCSVMHEALHNHYTQKSLSL  
**SPGKGGGLNDIFEAQKIEWHE**

**Black:** PD-L1 (a.a. 19-239)

**Green:** Linker

**Red:** Fc of human IgG1 (a.a.100-330)

**Blue:** Avi-tag™

**Purple:** Q66A mutation

OUR PRODUCTS ARE FOR RESEARCH USE ONLY. NOT FOR DIAGNOSTIC OR THERAPEUTIC USE.

To place your order, please contact us by Phone **1.858.829.3082** Fax **1.858.481.8694**

Or you can Email us at: **info@bpsbioscience.com**

Please visit our website at: **[www.bpsbioscience.com](http://www.bpsbioscience.com)**