

Data Sheet

PD-L1 (T20Q), Fc fusion, Biotin-labeled

Human, recombinant, Fc fusion protein
with C-terminal Avi-tag™

Catalog #: 71312

Lot #: 150728-G2 **Conc.:** 0.74 mg/ml

Formulated in: 8 mM Phosphate, pH 7.4,
110 mM NaCl, 2.2 mM KCl, and 20%
glycerol

Stability: At least 6 months at -80 °C. *Avoid
freeze/thaw cycles. Protein may be diluted
to ≥ 100 µg/ml in PBS + glycerol and stored
at -80 °C.*

References:

1. Freeman, G.J., *et al.*, *J Exp Med.* 2000
Oct 2;**192(7)**:1027-34.
2. Dong, H., *et al.*, *Nat Med.* 1999
Dec;**5(12)**:1365-9.

Description: Human secreted Programmed
Cell Death 1 Ligand 1 (PD-L1)-Fc fusion
protein, also known as CD274 and B7
homolog 1 (B7-H1) with a T20Q mutation,
GenBank Accession No. NM_014143,
amino acids 19-239, fused at the C-
terminus with the Fc portion of human IgG1,
with C-terminal Avi-tag™ expressed in a
HEK293 cell expression system and
enzymatically biotin-labeled using Avi-tag™
technology. MW = 54 kDa.

Application:

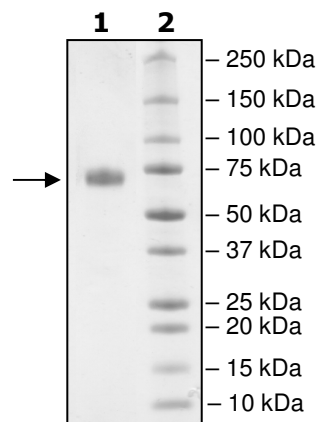
Useful for the study of protein-protein
interaction, epitope mapping, and *in vitro*
and *in vivo* protein function.

Quality Assurance

**4-20% SDS-PAGE
Coomassie staining**

Lane 1:
2 µg PD-L1 (T20Q)
Lane 2:
Protein Marker

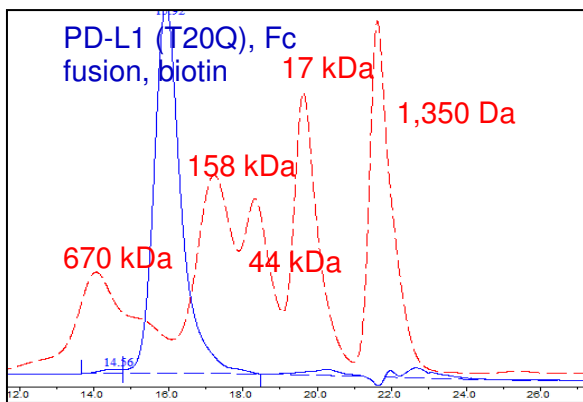
MW: 53.8kDa+glycans
Purity: ≥90%



OUR PRODUCTS ARE FOR RESEARCH USE ONLY. NOT FOR DIAGNOSTIC OR THERAPEUTIC USE.

To place your order, please contact us by Phone **1.858.829.3082** Fax **1.858.481.8694**
Or you can Email us at: info@bpsbioscience.com
Please visit our website at: www.bpsbioscience.com

Gel Filtration Curve



< 10%
 Aggregates

Sequence:

FQVTVPKDLVVEYGSNMTIECKFPVEKQLDLAALIVQWEMEDKNI IQFVHGEECLKVQHSSYRQ
 RARLLKQQLSLGNAALQITDVKLQDAGVYRCMISYGGADYKRITVKVNAPYNKINQRILVVDPVT
 SEHELTCQAEGYPKAEVIWTSSDHQVLSGKTTTTNSKREEKLFNVTSTLRINTTTNEIFYCTFRR
 LDPEENHTAELVIPELPLAHPNERTDIEGRMDPKSCDKTHTCPPCPAPELLGGPSVFLFPPKPK
 DTLMI SRTPEVTCVVVDVSHEDPEVKFNWYVDGVEVHNAKTKPREEQYNSTYRVVSVLTVLHQDW
 LNGKEYKCKVSNKALPAPIEKTISKAKGQPREPQVYTLPPSREEMTKNQVSLTCLVKGFYPSDIA
 VEWESNGQPENNYKTPPVLDSDGSFFLYSKLTVDKSRWQQGNVFCSCVMHEALHNHYTQKLSLSL
 SPGKGGGLNDIFEAQKIEWHE

Black: PD-L1 (a.a. 19-239)
 Green: Linker
 Red: Fc of human IgG1 (a.a.100-330)
 Blue: Avi-tag™
 Purple: T20Q mutation

OUR PRODUCTS ARE FOR RESEARCH USE ONLY. NOT FOR DIAGNOSTIC OR THERAPEUTIC USE.

To place your order, please contact us by Phone **1.858.829.3082** Fax **1.858.481.8694**
 Or you can Email us at: info@bpsbioscience.com
 Please visit our website at: www.bpsbioscience.com