

Data Sheet

TUT4, FLAG-tag

Human, Recombinant, C-terminal FLAG-tag
Catalog #: 71259

Lot #: 160617 **Conc.:** 0.49 mg/ml

Formulated in: 40 mM Tris-HCl, pH 8.0, 110 mM NaCl, 2.2 mM KCl, 0.04% Tween-20, 20% Glycerol and 100 µg/mL Flag peptide.

Stability: At least 6 months at -80°C. Avoid freeze/thaw cycles. Storing diluted enzyme is not recommended, if necessary use carrier protein (BSA 0.1 – 0.5%).

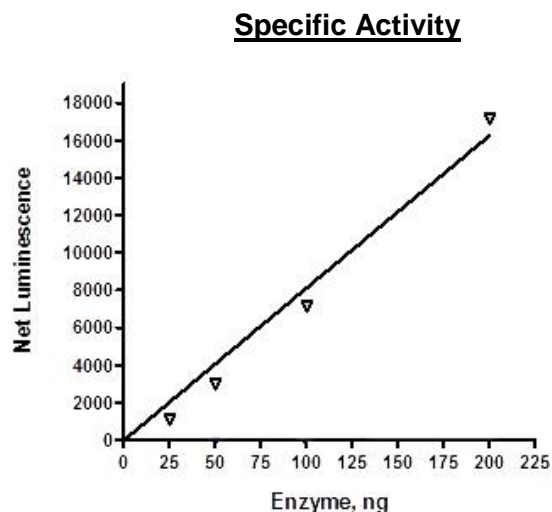
References:

1. Hagan, J. *et al.*, *Nature Structural & Molecular Biology*. 2009 Aug **16**: 1021-1025
2. Jones, M. *et al.*, *Nature Cell Biology*. 2009 Aug; **11**:1157-1163

Description: Human TUT4, also known as ZCCHC11, GenBank Accession number NM_001009881, a.a. 212-1313 with C-terminal FLAG-Tag. MW = 127 kDa, expressed in an HEK293 expression system.

Application: Useful for the study of enzyme kinetics, screening inhibitors, and selectivity profiling.

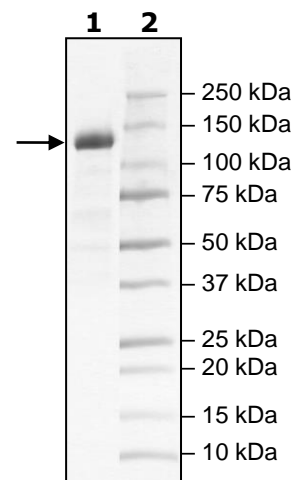
Quality Assurance



4-20% SDS-PAGE Coomassie staining

Lane 1:
2 µg TUT4
Lane 2:
Protein Marker

MW: 127 kDa
Purity: ≥88%



OUR PRODUCTS ARE FOR RESEARCH USE ONLY. NOT FOR DIAGNOSTIC OR THERAPEUTIC USE.

To place your order, please contact us by Phone **1.858.829.3082** Fax **1.858.481.8694**

Or you can Email us at: info@bpsbioscience.com

Please visit our website at: www.bpsbioscience.com