

## Data Sheet

### SIRP- $\alpha$ (CD172a), Biotin-Labeled, His-tag

Human, recombinant, C-terminal Avi-His-tag

**Catalog #:** 71138

**Lot #:** 150604

**Conc.:** 2.77 mg/ml

**Formulated in:** 8 mM Phosphate, pH 7.4, 110 mM NaCl, 2.2 mM KCl, and 20% glycerol

**Stability:** At least 6 months at  $-80^{\circ}\text{C}$ . Avoid freeze-thaw cycles. *Protein may be diluted to  $\geq 100 \mu\text{g/ml}$  in PBS + glycerol and stored at  $-80^{\circ}\text{C}$ .*

**References:**

1. Hatherley, D., *et al.*, *Mol. Cell*, 2008, **31**:266-77
2. Baba, N., *et al.*, *J. Exp. Med.*, 2013, **210**(6):1251-63

**Description:** Signal regulatory protein-alpha (SIRP- $\alpha$ ), also known as Tyrosine-protein phosphatase non-receptor type substrate 1, CD172a, Bit, and MyD-1, GenBank Accession No. NM\_080792, a.a. 27-370, with C-terminal Avi and His tags, MW 40.3 kDa\*, expressed in a HEK293 expression system and enzymatically biotinylated using Avitag<sup>TM</sup> technology. This protein acts as a receptor for CD47; a.a. 27-370 correspond to the extracellular portion of SIRP- $\alpha$ . \*Note: SIRP- $\alpha$  is heavily glycosylated, resulting in higher molecular weight.

**Application:** Useful for the study of protein-protein interaction and in vitro and in vivo protein function studies.

## Quality Assurance

**4-20% SDS-PAGE**  
**Coomassie staining**

**Lane 1:**

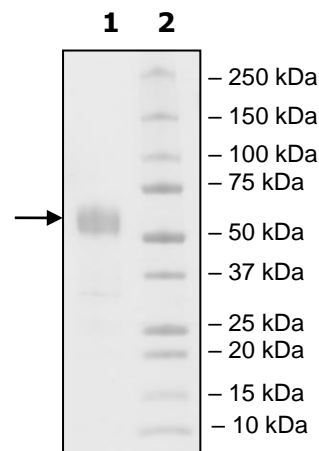
3  $\mu\text{g}$  Sirp  $\alpha$

**Lane 2:**

Protein Marker

**MW:** 40.3 kDa+glycans

**Purity:**  $\geq 90\%$



OUR PRODUCTS ARE FOR RESEARCH USE ONLY. NOT FOR DIAGNOSTIC OR THERAPEUTIC USE.

To place your order, please contact us by Phone **1.858.829.3082** Fax **1.858.259.5734**

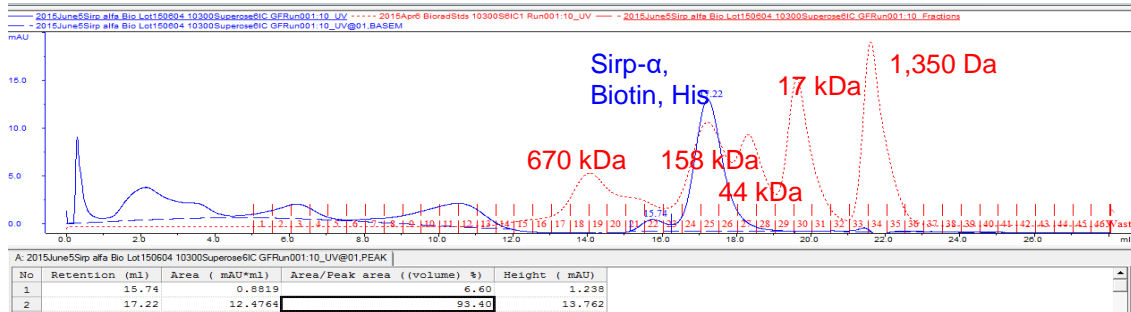
Or you can Email us at: [info@bpsbioscience.com](mailto:info@bpsbioscience.com)

Please visit our website at: [www.bpsbioscience.com](http://www.bpsbioscience.com)



6044 Cornerstone Court West, Suite E  
 San Diego, CA 92121  
 Tel: 1.858.829.3082  
 Fax: 1.858.481.8694  
 Email: [info@bpsbioscience.com](mailto:info@bpsbioscience.com)

## Gel Filtration Trace



## Protein Sequence

GVAGEEELQVIQPKSVLVAAGETATLRCTATSLIPVGPIQWFRGAGPGRELIYNQKEG  
 HFPRVTTVSDLTKRNNMDFSIRIGNITPADAGTYCYVKFRKGPDDVEFKSGAGTELSV  
 RAKPSAPVVSGPAARATPQHTVSFTCESHGFSPRDITLKWFKNGNELSDFQTNVDPVG  
 ESVSYSIHSTAKVVLTRDVDHSQVICEVAHVTLQGDPLRGTANLSETIRVPPTLEVTQQP  
 VRAENQVNVTCQVRKFYPQRLQLTWLENGNVSRRTETASTVTENKDGTYNWMSWLLVN  
 VSAHRDDVKLTCQVEHDGQPAVSKSHDLKVS AHPKEQGSNTAAENTGSNERGGGLND  
 IFEAQKIEWHEHHHHHH

Black: SIRP $\alpha$  (a.a. 27-370)

Blue: Avi

Red: His(6x)

OUR PRODUCTS ARE FOR RESEARCH USE ONLY. NOT FOR DIAGNOSTIC OR THERAPEUTIC USE.

To place your order, please contact us by Phone **1.858.829.3082** Fax **1.858.259.5734**

Or you can Email us at: [info@bpsbioscience.com](mailto:info@bpsbioscience.com)

Please visit our website at: [www.bpsbioscience.com](http://www.bpsbioscience.com)