

Data Sheet

CD160, His-tag, Biotin-labeled

Human, recombinant, His-tag, biotin labeled

Catalog #: 71135

Lot #: 150317

Conc.: 0.86 mg/ml

Formulated in: 8 mM Phosphate, pH 7.4, 110 mM NaCl, 2.2 mM KCl, and 20% glycerol

Stability: At least 6 months at -80°C . Avoid freeze/thaw cycles. Protein may be diluted to $\geq 100 \mu\text{g/ml}$ in PBS + glycerol and stored at -80°C .

References:

1. Cai, G., *et al.*, *Nat. Immunol.* 2008; **9**: *Immunol.* 2008; **9**: 176-185.
2. Le Bouteiller, P. *et al.*, *Proc. Nat. Acad. Sci. USA* 2002; **99(26)**: 16963- 16968.

Description:

Human CD160, also known as Natural killer cell receptor BY55, GenBank Accession No. NM_007053, a.a. 27-159 expressed in a HEK293 cell expression system, with a C-terminal His-tag and enzymatically biotin-labeled using Avi-tag™ technology. MW = 17.5 kDa. This protein runs at a higher MW by SDS-PAGE due to glycosylation.

Application:

Useful for the study of protein-protein interaction and in vitro and in vivo protein function studies.

Quality Assurance

4-20% SDS-PAGE Coomassie Staining

Lane 1:

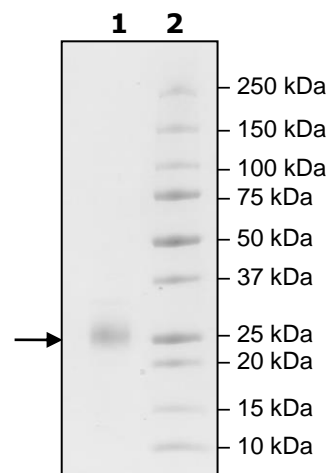
2 μg CD160

Lane 2:

Protein Marker

MW: 18 kDa + glycans

Purity: $\geq 90\%$



OUR PRODUCTS ARE FOR RESEARCH USE ONLY. NOT FOR DIAGNOSTIC OR THERAPEUTIC USE.

To place your order, please contact us by Phone **1.858.829.3082** Fax **1.858.481.8694**

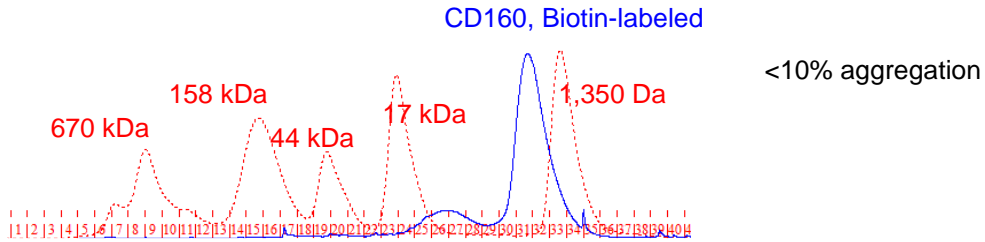
Or you can Email us at: info@bpsbioscience.com

Please visit our website at: www.bpsbioscience.com



6042 Cornerstone Court W, Ste B
San Diego, CA 92121
Tel: 1.858.202.1401
Fax: 1.858.481.8694
Email: info@bpsbioscience.com

Gel Filtration Curve



OUR PRODUCTS ARE FOR RESEARCH USE ONLY. NOT FOR DIAGNOSTIC OR THERAPEUTIC USE.

To place your order, please contact us by Phone **1.858.829.3082** Fax **1.858.481.8694**
Or you can Email us at: info@bpsbioscience.com
Please visit our website at: www.bpsbioscience.com