

## Data Sheet

### PDE4D3

Human, recombinant, N-terminal GST tag

Catalog #: 60046

Lot#: 121022-G      Conc.: 0.28 mg/ml

**Formulated in:** 40 mM Tris, pH 8.0, 110 mM NaCl, 2.2 mM KCl, 0.04% Tween-20, 20% glycerol, and 3 mM DTT.

**Stability:** >6 months at -80°C

**References:**

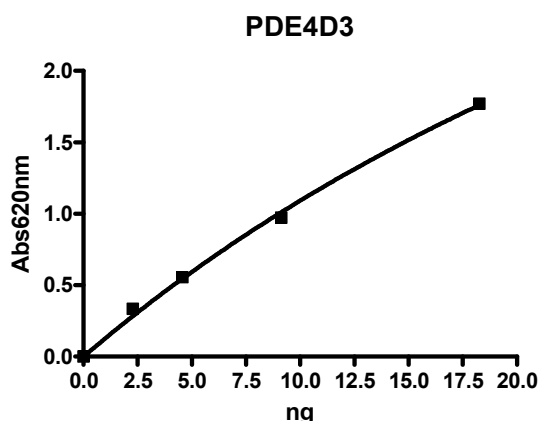
1. Fidani, L., et al., *Eur. J. Neurol.* **14** (7), 745-749 (2007).
2. Baillie, G.S., et al., *Biochem. J.* **404** (1), 71-80 (2007).

**Description:** Human PDE4D3 (GenBank Accession No. NM\_006203), full length, with N-terminal GST tag, MW=102.4 kDa, expressed in a Baculovirus infected Sf9 cell expression system.

**Specific Activity:** 13,000 pmole/min/μg. Assay conditions: 10 mM Tris-HCl, pH 7.4, 10 mM MgCl<sub>2</sub>, 0.05% Tween-20, 200 μM cAMP, and PDE4D3 at 37°C for 20 min. Quantified by 5'-nucleotidase cleaving the 5'-AMP product and releasing the phosphate group which is detected by Malachite Green Reagent.

**Application:** Useful for the study of enzyme kinetics, screening inhibitors, and selectivity profiling.

### Quality Assurance

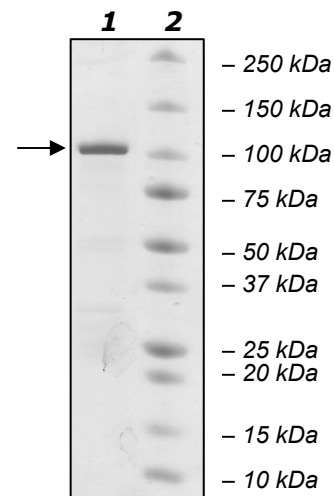


**10% SDS-PAGE  
Coomassie staining**

**Lane 1:**  
2 μg PDE4D3

**Lane 2:**  
Protein Marker

**MW:** 102 kDa  
**Purity:** ≥75%



OUR PRODUCTS ARE FOR RESEARCH USE ONLY. NOT FOR DIAGNOSTIC OR THERAPEUTIC USE.

To place your order, please contact us by Phone 1.858.829.3082 Fax 1.858.481.8694

Or you can Email us at: [info@bpsbioscience.com](mailto:info@bpsbioscience.com)

Please visit our website at: [www.bpsbioscience.com](http://www.bpsbioscience.com)