

Data Sheet

PDE4D3

Human, recombinant, N-terminal GST tag

Catalog #: 60046

Lot#: 121017-G **Conc.:** 0.1 mg/ml

Formulated in: 40 mM Tris, pH 8.0, 110 mM NaCl, 2.2 mM KCl, 20% glycerol, and 3 mM DTT.

Stability: >6 months at -80°C

References:

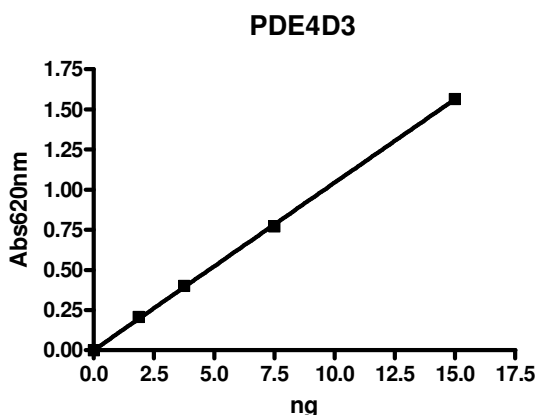
1. Fidani, L., *et al.*, *Eur. J. Neurol.* **14** (7), 745-749 (2007).
2. Baillie, G.S., *et al.*, *Biochem. J.* **404** (1), 71-80 (2007).

Description: Human PDE4D3 (GenBank Accession No. NM_006203), full length, with N-terminal GST tag, MW=102.4 kDa, expressed in a Baculovirus infected Sf9 cell expression system.

Specific Activity: 12,920 pmole/min/μg. Assay conditions: 10 mM Tris-HCl, pH 7.4, 10 mM MgCl₂, 0.05% Tween-20, 200 μM cAMP, and PDE4D3 at 37°C for 20 min. Quantified by 5'-nucleotidase cleaving the 5'-AMP product and releasing the phosphate group which is detected by Malachite Green Reagent.

Application: Useful for the study of enzyme kinetics, screening inhibitors, and selectivity profiling.

Quality Assurance

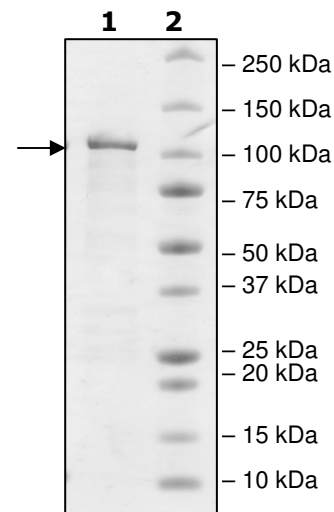


**10% SDS-PAGE
Coomassie staining**

Lane 1:
2 μg PDE4D3

Lane 2:
Protein Marker

MW: 102 kDa
Purity: ≥75%



OUR PRODUCTS ARE FOR RESEARCH USE ONLY. NOT FOR DIAGNOSTIC OR THERAPEUTIC USE.

To place your order, please contact us by Phone **1.858.829.3082** Fax **1.858.481.8694**

Or you can Email us at: info@bpsbioscience.com

Please visit our website at: www.bpsbioscience.com