

Data Sheet

SETD2 (1418 – 1714)

Human, recombinant, N-terminal GST tag

Catalog #: 53019

Lot#: 130625-E3 **Conc.:** 0.52 mg/ml

Formulated in: 40 mM Tris-HCl, pH 8.0,
110 mM NaCl, 2.2 mM KCl, 16 mM
glutathione, 20% glycerol.

Stability: >6 months at -80°C . *Avoid
freeze/thaw cycles.*

References:

1. Sun X.J., *et al.*, *J. Biol. Chem.* **280**(42),
35261-35271 (2005).
2. Rega S. *et al.*, *Mol. Cell Neurosci.* **18**(1),
68-79 (2001).

Description: Human SETD2, also known as SET2 and HYPB, (GenBank Accession No. NM_014159), amino acids 1418-1714, with N-terminal GST tag, MW = 60.9 kDa, expressed in an *E. coli* expression system.

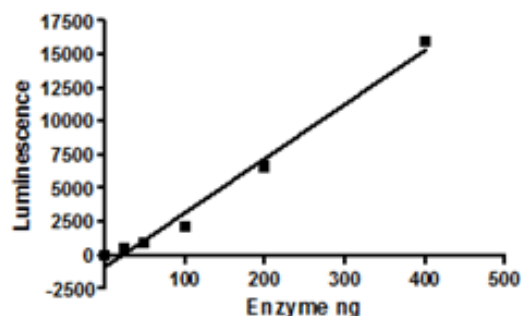
Assay conditions:

50 μl reaction mix (50 mM TRIS pH 8.8, 5 mM MgCl_2 , 4 mM DTT, 20 μM S-adenosyl-methionine, and varying amounts of SETD2) add to the wells coated with the substrate. Incubate at room temp for 1 hr. Add antibody against methylated K36 residue of histone H3, incubate 1 hr. Then incubate 30 min. with HRP-labeled secondary antibody. Finally, add HRP chemiluminescent substrate and read luminescence.

Application: Useful for the study of enzyme kinetics, screening inhibitors, and selectivity profiling.

Quality Assurance

Specific Activity



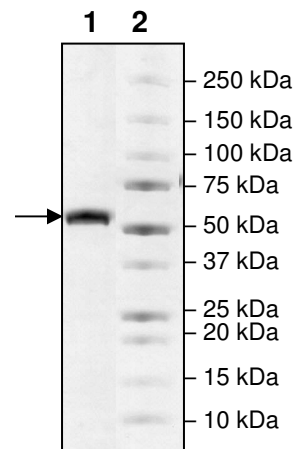
4-20% SDS-PAGE Coomassie staining

Lane 1:
2.5 μg SETD2

Lane 2:
Protein Marker

MW: 61 kDa

Purity: $\geq 90\%$



OUR PRODUCTS ARE FOR RESEARCH USE ONLY. NOT FOR DIAGNOSTIC OR THERAPEUTIC USE.

To place your order, please contact us by Phone **1.858.202.1401** or **1.858.481.8694**, Fax
1.858.259.5734

Or you can Email us at: info@bpsbioscience.com
Please visit our website at: www.bpsbioscience.com



6044 Cornerstone Court West, Suite E
San Diego, CA 92121
Tel: 1.858.829.3082
Fax: 1.858.481.8694
Email: info@bpsbioscience.com

Sequence:

MSPILGYWKIKGLVQPTRLLLEYLEEKYEEHLYERDEGDKWRNKKFELGLEFPNLPYYI
DGDVKLTQSMAIRYIADKHNMLGGCPKERAEISMLEGAVLDIRYGVSRIAYSKDFETLK
VDFLSKLPEMLKMFEDRLCHKTYLNGDHVTHPDFMLYDALDVVLYMDPMCLDAFPKLV
CFKKRIEAIQIDKYLKSSKYIAWPLQGQWQATFGGGDHPPKSDLEVLFGGPLGSDGELQ
DRKKVRVEVEQGETSVPPGSALVGPSCVMDDFRDPQRWKECAKQGKMPCYFDLIEE
NVYLTERKKNKSHRDIKRMQCECTPLSKDERAQGEIACGEDCLNRLLMIECSSRCPN
GDYCSNRRFQRKQHADVEVILTEKKGWGLRAAKDLPSNTFVLEYCGEVL DHKEFKA
RVKEYARNKNIHYYFMALKNDEIIDATQKGNCSR FMNHSCEPNCETQKWTVNGQLRV
GFFTTKLVP SGSELTFDYQFQRYGKEAQKCF CGSANC RGYLGGENRV SIRAAGGKM
KKERSRKKDS

Red: GST Tag

Blue: Linker

Black: SETD2(aa 1418 – 1714)

OUR PRODUCTS ARE FOR RESEARCH USE ONLY. NOT FOR DIAGNOSTIC OR THERAPEUTIC USE.

To place your order, please contact us by Phone **1.858.202.1401** or **1.858.481.8694**, Fax
1.858.259.5734

Or you can Email us at: info@bpsbioscience.com

Please visit our website at: www.bpsbioscience.com