

## Data Sheet

### EED, FLAG-tag

Human, recombinant, N-terminal FLAG-tag

**Catalog #:** 50280

**Lot #:** 181127

**Conc.:** 0.41 mg/ml

**Formulated in:** 40mM Tris-HCl pH8.0, 110mM NaCl, 2.2mM KCl, 20% glycerol, 3mM DTT and 100 µg/mL FLAG peptide

**Stability:** At least 6 months at -80°C. *Avoid freeze/thaw cycles. Storing diluted protein is not recommended, if necessary, use carrier protein (BSA 0.1 – 0.5%).*

#### References:

1. Schumacher, A., *et al.* (1998) *Genomics* **54(1)**: 79-88.
2. van der Vlag, J., *et al.* (1999). *Nat. Genet.* **23(4)**: 474–8.

#### Description:

Human Embryonic Ectoderm Development (hEED), also known as WAIT-1, GenBank Accession No. NM\_003797, a.a. 2-441 (end) with N-terminal FLAG-tag, MW= 51 kDa, expressed in Sf9 cells via a baculovirus expression system.

### Quality Assurance

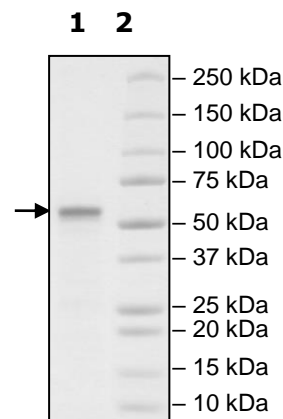
#### 4-20% SDS-PAGE Coomassie Staining

Lane 1:  
EED

Lane 2:  
Protein Marker

MW: 51 kDa

Purity: ≥90%



OUR PRODUCTS ARE FOR RESEARCH USE ONLY. NOT FOR DIAGNOSTIC OR THERAPEUTIC USE.

To place your order, please contact us by Phone **1.858.829.3082** Fax **1.858.481.8694**

Or you can Email us at: [info@bpsbioscience.com](mailto:info@bpsbioscience.com)

Please visit our website at: [www.bpsbioscience.com](http://www.bpsbioscience.com)