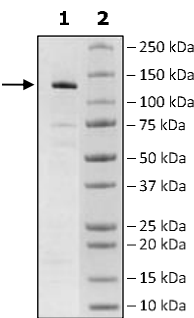


Product Information

Construct:	JARID1A(KDM5A) (1-1090-FLAG)
Concentration:	0.32 mg/ml
Species:	Human
Formulated In:	40 mM Tris-HCl, pH 8.0, 110 mM NaCl, 2.2 mM KCl, 100 µg/mL FLAG peptide and 20% Glycerol
Expression System:	Sf9
Format:	Aqueous buffer solution
Stability:	At least 6 months at -80°C. Avoid freeze/thaw cycles.
Storage:	-80°C
Genbank Accession:	NM_001042603
MW:	125 kDa
Purity:	88%
Specific Activity:	0.05 pmol/min/µg
Assay Conditions:	10 µl reaction mix containing assay buffer with 20 mM HEPES (pH 7.4), 50 mM NaCl, 1mM TCEP, 500 µM α-ketoglutarate, 25 µM iron, 2 mM ascorbic acid, 0.01% Tween-20, 0.5 µM biotinylated peptide substrate, and Jarid1A (20 – 100ng) added to the wells. Add antibody against di-methylated K4 peptide. Incubate for 30 min, then Streptavidin-conjugated secondary antibody followed by Alpha Screening detection.
Applications:	Useful for the study of enzyme kinetics, screening inhibitors, and selectivity profiling.

Quality Control Data

4-20% SDS-Page Coomassie Staining



Specific Activity

