

Data Sheet

BRAF, His-Tag (High Expression)

Human, Recombinant, N-terminal His-Tag

Catalog #: 41237

Lot #: 170306-1 **Conc.:** 0.625 mg/ml

Formulated in: 40 mM Tris-HCl, pH 8.0, 110 mM NaCl, 2.2 mM KCl, 0.04% Tween-20, 20% glycerol, 350 mM imidazole

Stability: At least 12 months from date of receipt at -80°C . Avoid freeze/thaw cycles. Storing diluted enzyme is not recommended, if necessary use carrier protein (BSA 0.1 – 0.5%).

References:

1. Sithanandam G., *et al.* (1990). *Oncogene*. **5(12)**: 1775–1780.
2. Tsai, J., *et al.* (2008). *Proc. Natl. Acad. Sci. USA* **105(8)**: 3041-46.

Description:

Human BRAF, also known as B-RAF1 and RAFB1, with 18 mutations to improve expression; S446A, S447A, I543A, I544S, I551K, Q562R, L588N, K630S, F667E, Y672S, A688R, L706S, Q709R, S713E, L716E, S720E, P722S, K723G. GenBank Accession #NM_004333, a.a. 444-723 with N-terminal His-tag, expressed in *E. coli* cells. MW = 33 kDa.

Quality Assurance

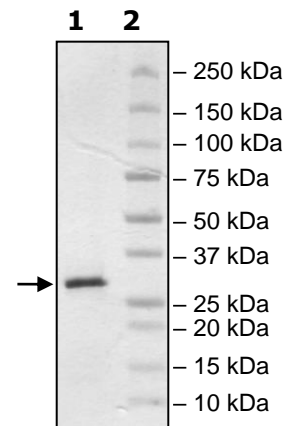
4-20% SDS-PAGE Coomassie staining

Lane 1:
BRAF

Lane 2:
Protein Marker

Purity: $\geq 90\%$

MW: 33 kDa



OUR PRODUCTS ARE FOR RESEARCH USE ONLY. NOT FOR DIAGNOSTIC OR THERAPEUTIC USE.

To place your order, please contact us by Phone **1.858.829.3082** Fax **1.858.481.8694**

Or you can Email us at: info@bpsbioscience.com

Please visit our website at: www.bpsbioscience.com