

Data Sheet

CERK, FLAG-Tag

Human, Recombinant, C-terminal FLAG-tag

Catalog #: 40617

Lot#: 170313 **Conc.:** 0.13 mg/ml

Formulated in: 40 mM Tris-HCl, pH 8.0, 110 mM NaCl, 2.2 mM KCl, 20% Glycerol and 100 µg/mL Flag peptide.

Stability: At least 6 months at -80°C. Avoid freeze/thaw cycles. Protein may be diluted to ≥ 100 µg/ml in PBS + glycerol and stored at -80°C.

References:

1. Mitra, P. *et al.*, *FEBS Lett.* **581 (4)**, 735-740 (2007)
2. Kim, T.J. *et al.*, *Biochem. Biophys. Res. Commun.* **342 (2)**, 611-617 (2006)

Description:

Human ceramide kinase (CERK) (GenBank Accession No. NM_022766), 1-537(end) with C-terminal Flag tag, MW= 60 kDa, expressed in baculovirus expression system.

Specific Activity: ≥90 pmole/min/µg.

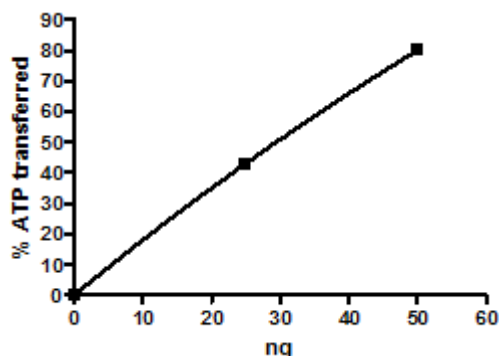
Assay Conditions: CERK activity was measured at 37°C for 25 minutes in a buffer (20 mM HEPES pH 7.2, 80 mM KCl, 3 mM CaCl₂, 10 mM MgCl₂, 2 mM DTT, 5 µM ATP) using a beta-Octylglucoside mixed micellar assay with 100 µM Ceramide (BPS# 40618). ATP reduction was detected using Kinase-Glo® Luminescent Kinase Assay Platform (Promega, Madison, WI).

Application:

Useful for the study of enzyme kinetics, screening inhibitors, and selectivity profiling.

Quality Assurance

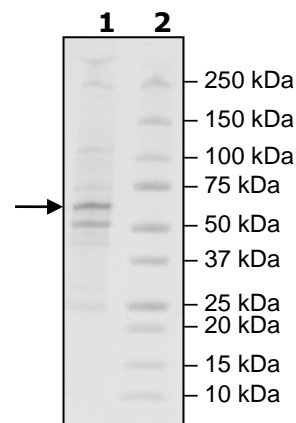
Specific Activity



**4-20% SDS-PAGE
Coomassie staining**

Lane 1:
2 µg CERK
Lane 2:
Protein Marker

MW: 60 kDa
Purity: ≥40%



OUR PRODUCTS ARE FOR RESEARCH USE ONLY. NOT FOR DIAGNOSTIC OR THERAPEUTIC USE.

To place your order, please contact us by Phone **1.858.829.3082** Fax **1.858.481.8694**
 Or you can Email us at: info@bpsbioscience.com
 Please visit our website at: www.bpsbioscience.com