

Data Sheet

EGFR, His-tag, GST-tag

Human, recombinant, C-terminal His-tag
 N-terminal GST-tag

Catalog #: 40187

Lot#: 200116-2 **Conc.:** 0.62 mg/ml

Formulated in: 40 mM Tris-HCl pH 8.0, 110 mM NaCl, 2.2 mM KCl, 0.04% Tween-20, 20% glycerol, 3 mM DTT.

Stability: At least 6 months at -80°C

Reference(s):

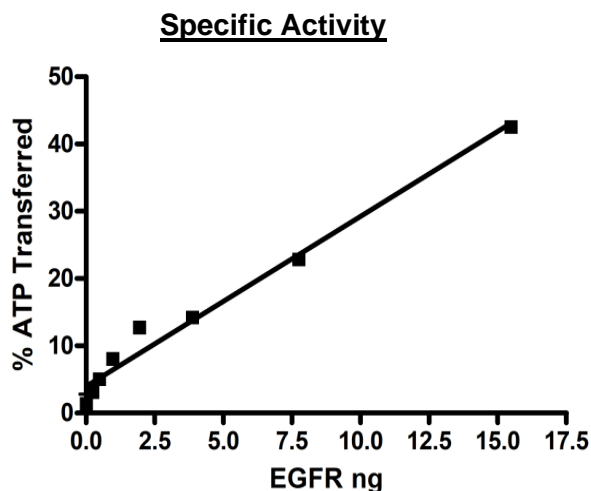
1. Nakamura, J.L. *Expert Opin. Ther. Targets* **11** (4), 463-472 (2007).
2. Kim, H.J., *et al. Curr. Biol.* **17** (5), 455-461 (2007).

Description: Human EGFR, also known as ERBB, mENA, ERBB1, and HER1, GenBank Accession No. NM_005228, a.a. 668-1210 (end), with C-terminal His-tag and N-terminal GST-tag, expressed in a Baculovirus infected Sf9 cell expression system. MW = 88 kDa.

Specific Activity: 800 pmol/min/ μg .
 Assay conditions: Assay was done in Kinase buffer containing 1 mM DTT using Poly-(Glu4:Tyr) substrate (0.2 mg/ml) and 20 μM ATP. Reaction was done at 30°C for 40 minutes. Amount of ATP transferred was calculated using Kinase-Glo reagent (Promega)

Application: Useful for the study of enzyme kinetics, screening inhibitors, and selectivity profiling.

Quality Assurance



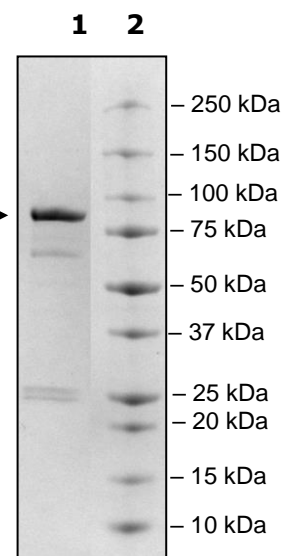
4-20% SDS-PAGE

Coomassie staining

Lane 1:
2 μg EGFR
Lane 2:
Protein Marker

MW: 88 kDa

Purity: $\geq 70\%$



OUR PRODUCTS ARE FOR RESEARCH USE ONLY. NOT FOR DIAGNOSTIC OR THERAPEUTIC USE.

To place your order, please contact us by Phone **1.858.202.1401** Fax **1.858.481.8694**
 Or you can Email us at: info@bpsbioscience.com
 Please visit our website at: www.bpsbioscience.com