

## Data Sheet

### p38 $\beta$ , Active, GST-tag

Human, Recombinant, N-terminal GST tag  
**Catalog #:** 40143  
**Lot #:** 150617      **Conc.:** 0.10 mg/ml

**Formulated in:** 50 mM Tris-HCl, pH 7.5, 150 mM NaCl, 10 mM glutathione, 0.1 mM EDTA, 0.1 mM PMSF, 25% glycerol and 0.25 mM DTT.

**Stability:** At least 6 months at  $-80^{\circ}\text{C}$ . Avoid freeze/thaw cycles. Storing diluted enzyme is not recommended, if necessary, use carrier protein (BSA 0.1 – 0.5%).

**References:**

- Han, J. *et al.*, *Science*. **265**: 808-811, 1994.
- Ge, B. *et al.*, *Science*. **295**: 1291-1294, 2002.

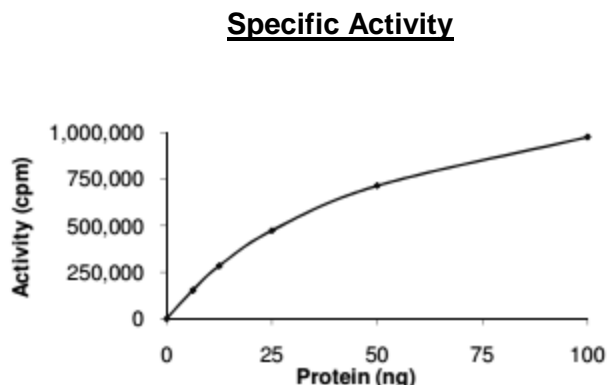
**Description:** Recombinant full-length human p38 $\beta$  (Genbank Accession No. NM\_002751) with an N-terminal GST-tag, expressed in Sf9 insect cells using a baculovirus expression system.

**Specific Activity:** 780 pmol/min/ $\mu\text{g}$

Assay conditions: Assay conditions were 5 mM MOPS, 2.5 mM  $\beta$ -glycero-phosphate, 5 mM  $\text{MgCl}_2$ , 1 mM EGTA, 0.4 mM EDTA, 0.05 mM DTT, 50  $\mu\text{g/ml}$  BSA, 2 mM ATP, 0.2 mg/ml p38 substrate peptide (IPTTPITTTYFFFKKK) and 50  $\mu\text{M}$  [ $^{33}\text{P}$ ]-ATP at  $30^{\circ}\text{C}$  for 15 minutes. Spot reaction on phosphocellulose paper, fix in 1% phosphoric acid, and assay with a scintillation counter.

**Application:** Useful for the study of enzyme kinetics, screening inhibitors, and selectivity profiling.

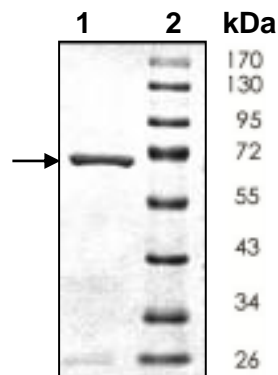
## Quality Assurance



**10% SDS-PAGE**  
**Coomassie staining**

**Lane 1:** p38 $\beta$   
**Lane 2:** Protein Marker

**MW:** 71 kDa  
**Purity:** >90%



OUR PRODUCTS ARE FOR RESEARCH USE ONLY. NOT FOR DIAGNOSTIC OR THERAPEUTIC USE.

To place your order, please contact us by Phone **1.858.829.3082** Fax **1.858.481.8694**

Or you can Email us at: [info@bpsbioscience.com](mailto:info@bpsbioscience.com)

Please visit our website at: [www.bpsbioscience.com](http://www.bpsbioscience.com)