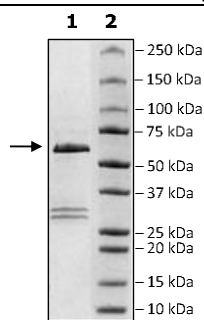


Product Information

Construct:	cRAF (Y340D, Y341D) (GST-306-648(end))
Concentration:	1.60 mg/ml
Species:	Human
Formulated In:	40 mM Tris-HCl pH 8.0, 110 mM NaCl, 2.2 mM KCl, 0.04% Tween-20, 20% glycerol, 3 mM DTT.
Expression System:	Sf9
Format:	Aqueous buffer solution
Stability:	At least 6 months at -80°C. Avoid freeze/thaw cycles.
Storage:	-80°C
Genbank Accession:	NM_002880
MW:	65 kDa
Purity:	72%
Specific Activity:	>158 pmol/min/μg
Assay Conditions:	Assay was done by using c-RAF Kinase Assay Kit with RAF substrate and 10 μM ATP. Reaction was done at 30°C for 45 min. Amount of ATP transferred was measured using Kinase-Glo reagent (Promega).
Applications:	Useful for the study of enzyme kinetics, screening inhibitors, and selectivity profiling.

Quality Control Data

4-20% SDS-Page Coomassie Staining



Specific Activity

