

## Data Sheet

### PB1 (BD6)

Human, recombinant, N-terminal His-tag

**Catalog #:** 31133

Lot #: 130607-2      Conc.: 0.26 mg/ml

**Formulated in:** 40 mM Tris-HCl, pH 8.0, 110 mM NaCl, 2.2 mM KCl, 0.04% Tween-20, 400 mM imidazole and 20% glycerol.

**Stability:** >6 months at -80°C

#### References:

1. Sekine, I., *et al.*, *Oncogene*. 2005 Apr 14;**24(16)**:2735-8.
2. Shibata, Y., *et al.*, *Dev Biol*. 2012 Jan 15;**361(2)**:349-57.

#### Description:

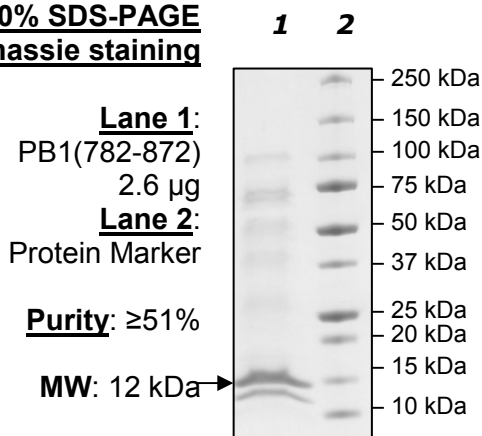
Human polybromo 1 (PB1), also known as PBRM1 and BRG1-associated factor 180, variant 2, (GenBank Accession No. NM\_018313), amino-acids 782-872 with N-terminal His-tag, MW = 12 kDa, expressed in an *E. coli* expression system.

#### Application:

Useful for the study of bromodomain binding assays, screening inhibitors, and selectivity profiling.

## Quality Assurance

### 4-20% SDS-PAGE Coomassie staining



OUR PRODUCTS ARE FOR RESEARCH USE ONLY. NOT FOR DIAGNOSTIC OR THERAPEUTIC USE.

To place your order, please contact us by Phone **1.858.829.3082** Fax **1.858.481.8694**

Or you can Email us at: [info@bpsbioscience.com](mailto:info@bpsbioscience.com)

Please visit our website at: [www.bpsbioscience.com](http://www.bpsbioscience.com)



6044 Cornerstone Court West, Suite E  
San Diego, CA 92121  
Tel: 1.858.829.3082  
Fax: 1.858.481.8694  
Email: [info@bpsbioscience.com](mailto:info@bpsbioscience.com)

**Protein Sequence:**

MHHHHHHIHNLFVSVMSHQDDEGRCYSDSLAEIPAVDPNFPNKPPLTFDIIRKNVENNR  
YRRLDLFQEHMFEVLERARRMNRTDSEIYEDAVELQQFF

OUR PRODUCTS ARE FOR RESEARCH USE ONLY. NOT FOR DIAGNOSTIC OR THERAPEUTIC USE.

To place your order, please contact us by Phone **1.858.829.3082** Fax **1.858.481.8694**  
Or you can Email us at: [info@bpsbioscience.com](mailto:info@bpsbioscience.com)  
Please visit our website at: [www.bpsbioscience.com](http://www.bpsbioscience.com)